

Living Shorelines

Training Successes and Lessons
Learned Breakout:

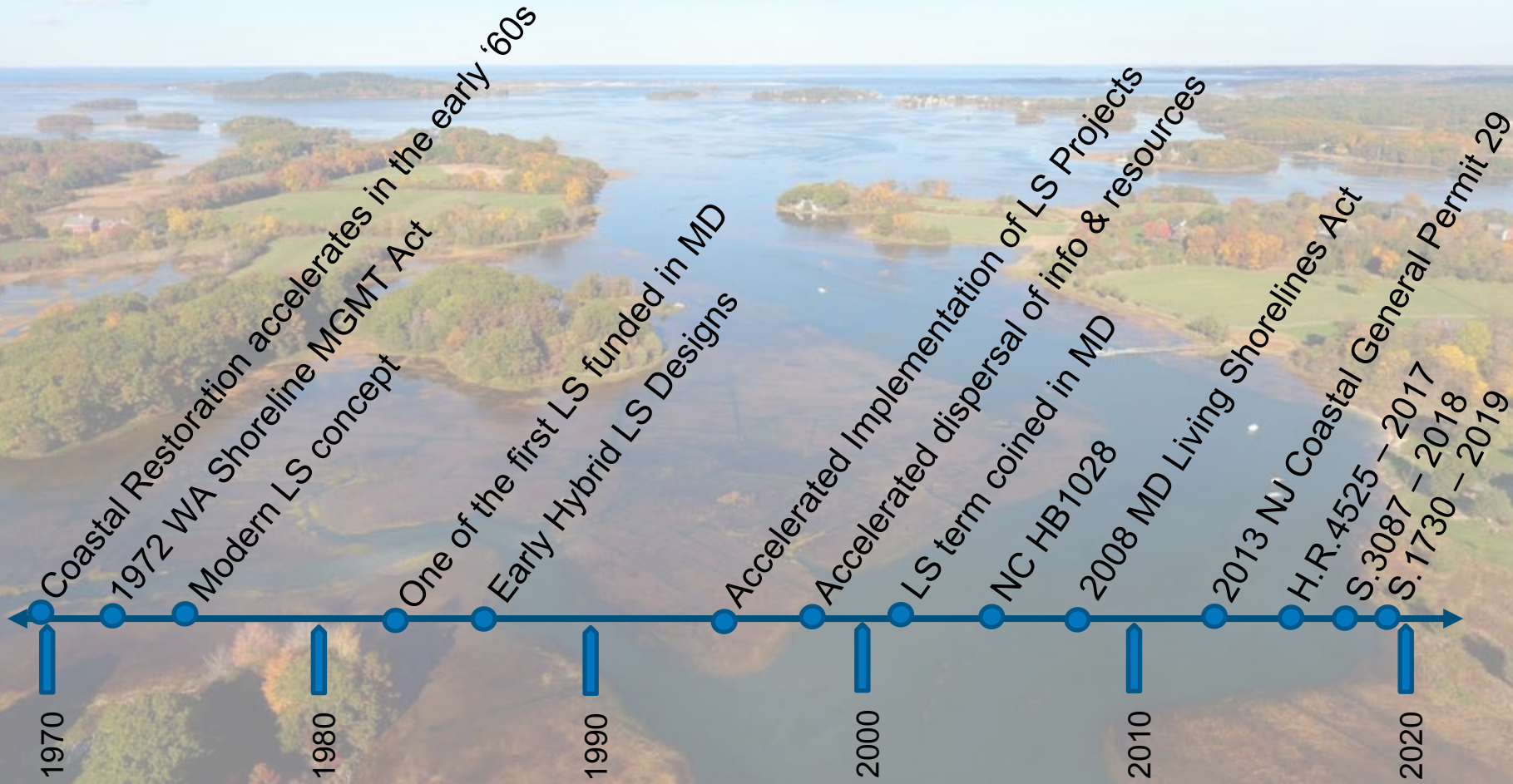
A National Snapshot

Chris Hilke
National Wildlife Federation





Living Shorelines: A Rapidly-Moving Field



Bridging the Information Gap

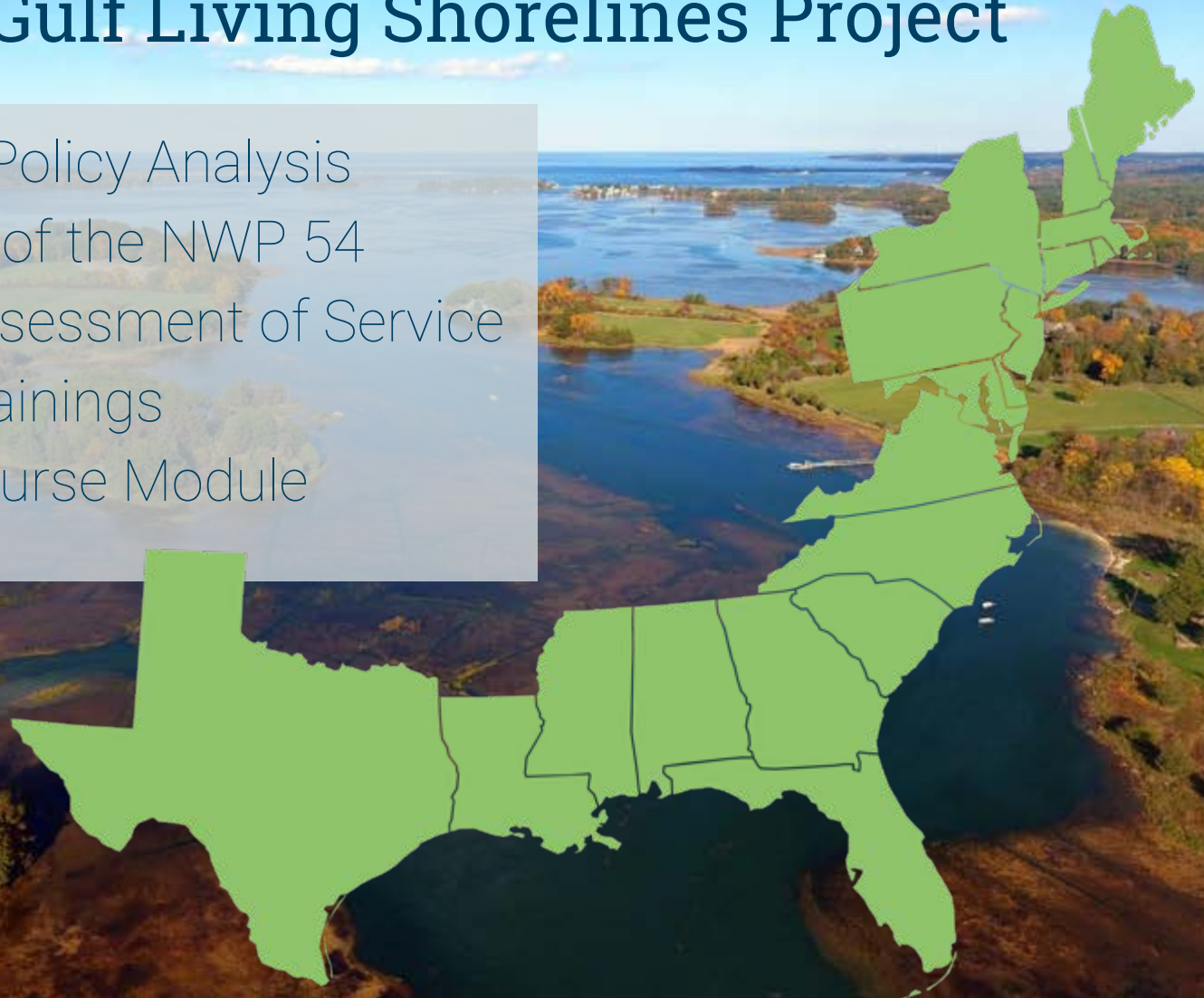
- What are Living Shorelines?
- What are the benefits to the approach?
- What are the different types of living shorelines?
- How do you design a living shoreline?
- How much do they cost?
- When and where can they be appropriately implemented?
- What is the period of performance?
- How do they perform compared to hard infrastructure?
- How do I permit a living shoreline?
- What are the limitations to the approach?





Atlantic & Gulf Living Shorelines Project

1. State-level Policy Analysis
2. Application of the NWP 54
3. National Assessment of Service Provider Trainings
4. Training Course Module



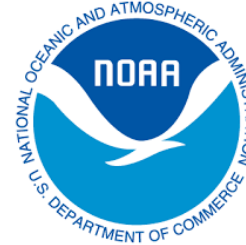


Coastal Zone Management Program

34 participating states and territories
Regulatory authority
Funding consistency



COASTS, OCEANS,
PORTS & RIVERS
INSTITUTE



RESTORE AMERICA'S ESTUARIES



North Carolina
Coastal Federation
Working Together for a Healthy Coast



What is being delivered?

- Workshops
- Conference Sessions
- Trainings
- Webinars
- Guidance Documents
- Certifications
- Programs
- Working Groups



Who are the Target Audiences?

- Marine Contractors
- Practitioners
- Engineers
- Developers
- Private Landowners
- Realtors
- Policy-makers
- Regulators
- General Public



State of Activity

- Living shoreline engagement and outreach activity in every coastal state
- Few national-scale outreach efforts
- Majority of trainings target multiple audiences
- Majority of trainings focus on introducing living shorelines in concept or practice
- Majority of outreach and engagement activities are short-term



State of Activity

- A small subset of trainings focus solely on marine contractors
- Private landowners are typically harder to reach
- Private landowners attend in smaller numbers as the target geography of the training increases
- A conducive regulatory/permitting environment does not necessarily correlate to greater numbers of experienced contractors
- A conducive regulator environment does not necessarily correlate to greater public demand



Questions for Consideration

- Are we where we need to be in terms of the reach and desired impact of living shoreline trainings?
- With all the outreach and education focused on living shorelines, why is the application of these approaches still limited in certain geographies?
- What factors are limiting the reach of living shoreline trainings across target audiences?



Questions for Consideration

What are the primary challenges limiting the effectiveness of living shoreline trainings?



Thank You

Chris Hilke
National Wildlife Federation

