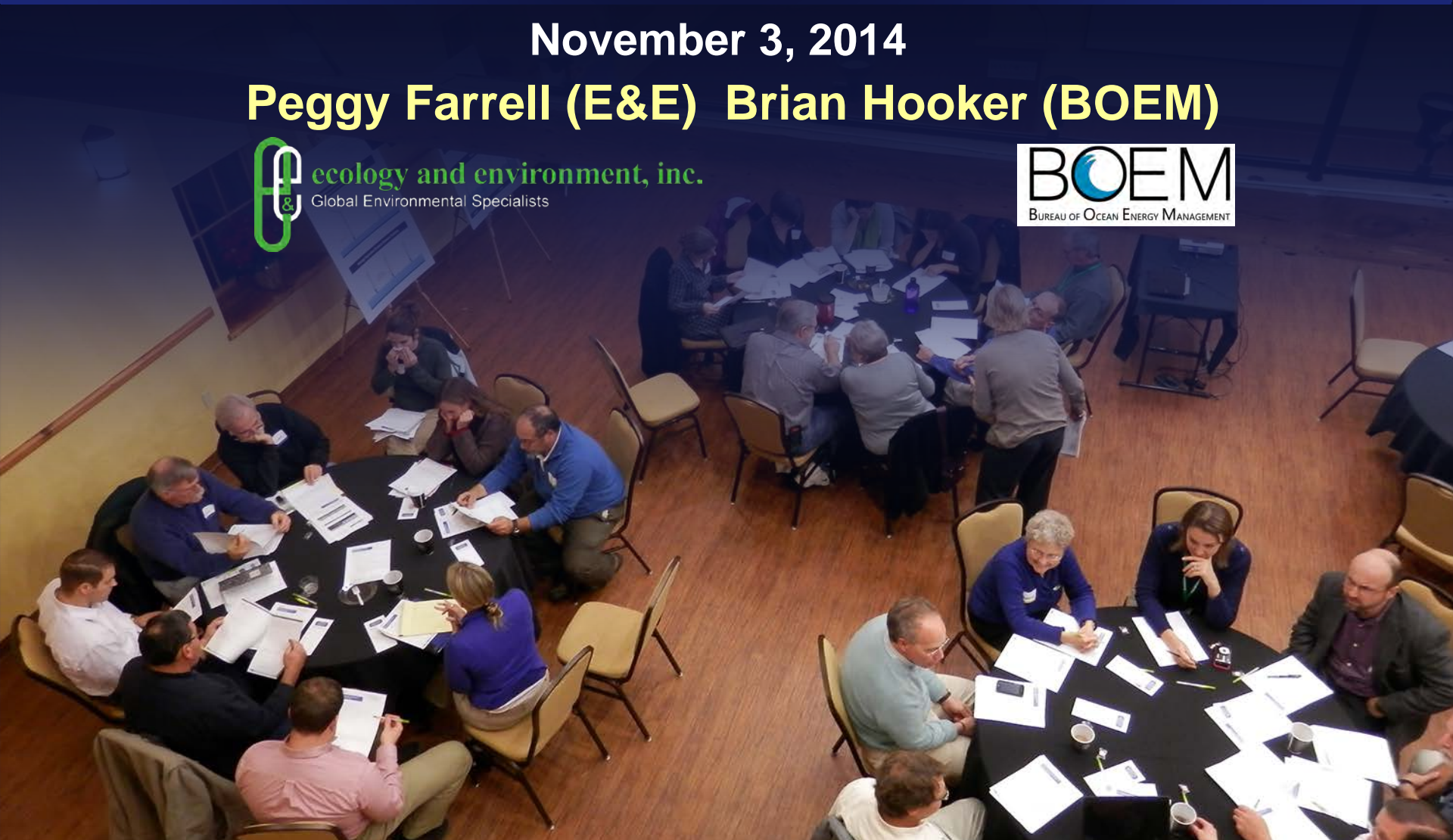


Development of Best Management Practices to Address Conflicts Between Offshore Wind Development and Fisheries

November 3, 2014

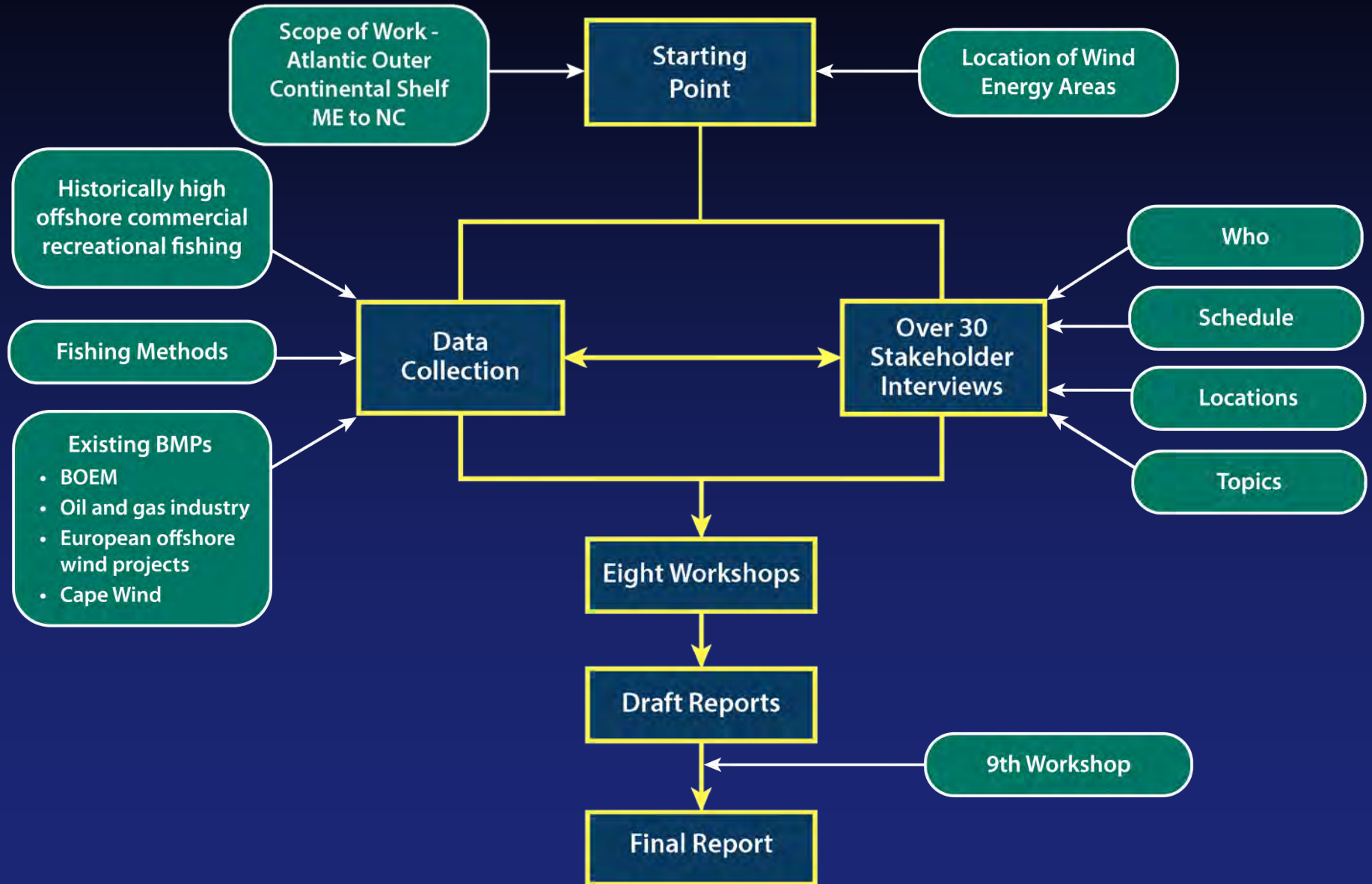
Peggy Farrell (E&E) Brian Hooker (BOEM)



Objectives

- **Early discussions with the fishing industry and wind energy developers**
- **Develop reasonable best management practices and mitigation measures**
- **Offset impacts to the fishing industry**
- **Use for analysis and decision making under NEPA**

Methodology



Workshops

- 8 initial workshops held during the winter between Oct. 2012 and Feb. 2013
- 9th workshop held on Long Island - April 2014
- Over 200 attendees



Workshops



- Open dialogue
- Small working groups



Workshops



- Neutral facilitator
- Part 1 – Concerns
- Part 2 – Methods to reduce conflicts



Workshops



Outcome of Workshops

- Opportunity to provide comments on the construction and operational phases
- Near term product - updated list of fishing-related best management practices (BMPs)
- Long term product – application of new fishing-related BMPs to the review of site assessment plans (SAPs), construction and operation plans (COPs), and general activity plans (GAPs)



Comments on Draft BMPS



- The MAFMC held a workshop February 5-6 in Baltimore, MD to provide comments on the draft BMPs. UK fishing perspectives were also presented
- The MAFMC submitted their comments to BOEM on February 28
- Participant comments and comments from NMFS were also submitted during this period

BMP No. 1: Fisheries Communication and Outreach Plan

- The lessee shall develop a fisheries communication and outreach plan
 - Applicable for all stages of development
 - Provides for a fisheries liaison (FL) and a fisheries representative (FR)
 - Identifies communication methods/frequency
 - Establishment of process/protocol to address gear loss



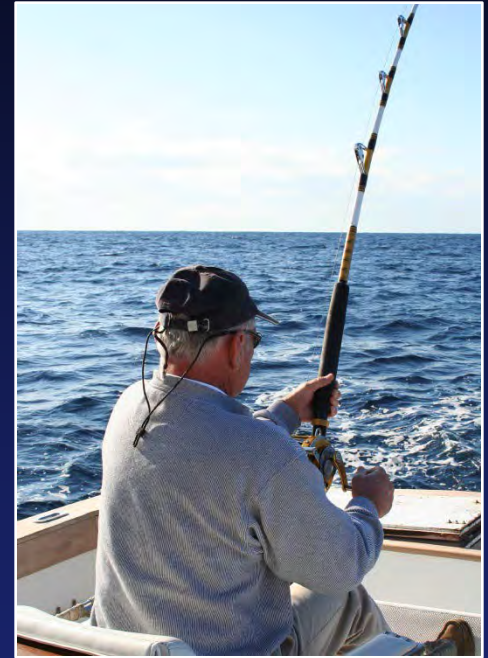
BMP No. 2: Project Siting, Design, Navigation and Access

- Applicable in all phases
- Applicant should consider input regarding:
 - Configuration of facility
 - Minimization of scour and sedimentation
 - Minimization of turbidity
 - Cable route planning
 - Dockside coordination
- Develop a detailed publically available schedule prior to construction
- Considerations should be given to seasonal or sector use of a particular area



BMP No. 3: Safety

- Applicable during all phases
- Marking of structures beyond that required of USCG and FAA
- Specific information to include in the developer's Safety Management System
 - Clear communication protocols in event of an accident
 - Assumptions
 - Roles and responsibilities



BMP No. 4: Environmental Monitoring Plan

- Applicable to construction, operations, and decommissioning
- Plan should be detailed enough to know
 - Monitoring schedule following storm events
 - Regular monitoring and maintenance schedule and possible disruptions to fishing



BMP No. 5 Financial Compensation

- **Developer should support the fishing industry's adoption of new technology/net design that would minimize interactions between gear and offshore facilities**
- **The lessee would consider monetary support for enhancing or improving fishing port or shore-side facilities associated with an offshore wind facility. Well-maintained port or shore-side facilities are important for the efficient and safe operation of every fishing vessel**
- **Various forms of direct compensatory mitigation**

Conclusions

- Stakeholders appreciated having early discussions with BOEM
- Participants had different levels of understanding
- Meeting materials were updated after each meeting
- Workshop attendance was better when coinciding with another fisheries event
- Input from stakeholders was critical

