



Clean Water
State Revolving Fund

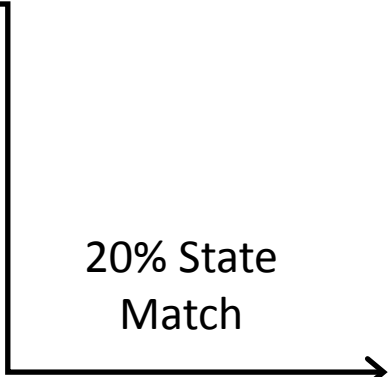
Flexible Funding for Watershed Protection and Restoration Projects

Restore America's Estuaries Conference
November 4, 2014

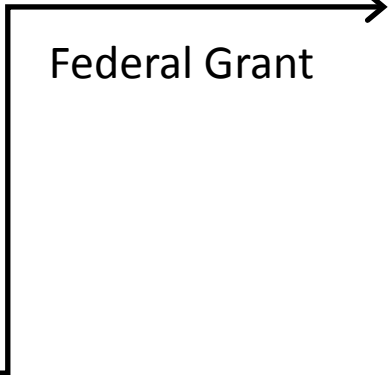
What is the CWSRF?



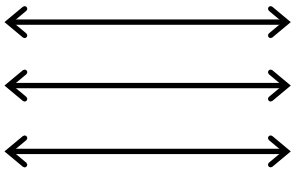
20% State Match



Federal Grant

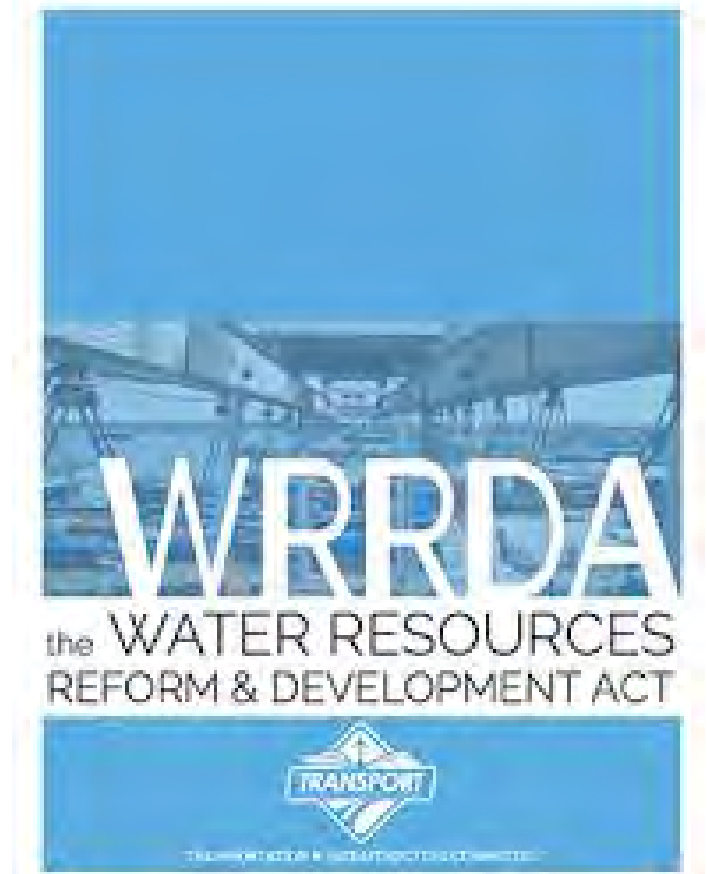


CWSRF Loan



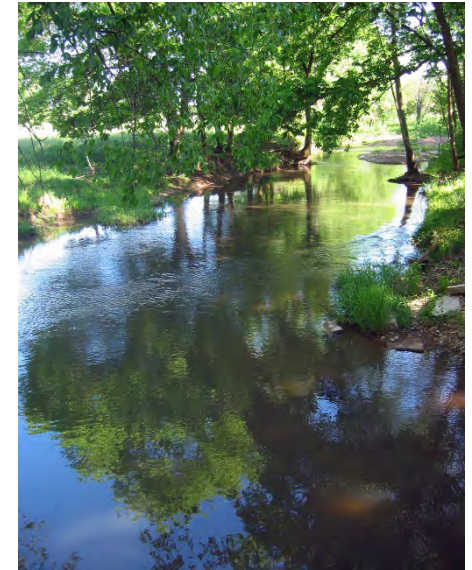
Big Changes

- Water Resources Reform and Development Act
 - Additional subsidization
 - Principal forgiveness
 - Negative interest loans
 - Grants
 - Up to 30 year loan terms
 - New eligibilities



Broad Eligibilities

- Publicly owned treatment works
- Nonpoint source projects
- Implementation of National Estuary Program CCMP
- Decentralized systems
- Stormwater projects
- Water conservation
- Watershed pilot projects
- Energy efficiency
- Water reuse projects
- Security measures at POTWs
- Technical assistance



Broad Eligibilities

- Wastewater treatment plant
- Sewer interceptors
- Sewer collection systems
- Pumps and equipment
- CSO correction
- Land purchase for treatment application
- Stormwater pipes, storage and treatment
- Sediment traps and basins
- Wetland restoration
- Conservation easement
- Onsite sewage treatment (septics)
- Cluster systems
- Land for reservoirs
- Green infrastructure
- Energy-efficiency POTW upgrades
- Water conservation education
- Water-efficient fixtures
- Water meters
- Recycled water distribution system
- Alternative energy for a POTW
- Landfill leachate collection/liners
- Planting trees and shrubs
- Pervious pavement
- Contaminated site cleanup
- Efficient irrigation equipment
- Manure management BMPs
- More....

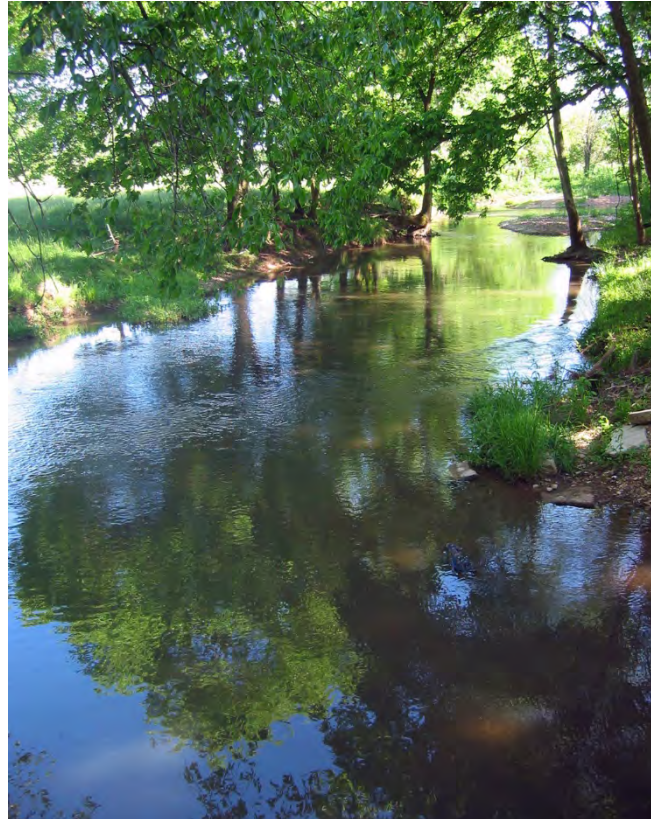
Assistance Recipients

- Municipalities
- Publicly Owned Wastewater Treatment Works
- Privately Owned Wastewater Treatment Works*
- Conservation District
- Nonprofit Organizations
- Watershed Groups
- Homeowners
- Farmers

*for certain project types/eligibilities

Flexible Repayment

This does not generate a
repayment source...



Cost Savings

- CWSRF programs save communities significant financing costs:
 - For example, when the market rate is 6.0%, a 3.0% CWSRF loan to a \$100,000 project is equal in savings to a \$23,000 grant and a \$77,000 loan at market rates.

Cost Savings of CWSRF Below-Market Interest Rates						
		CWSRF Rate				
		0.0%	1.0%	2.0%	3.0%	4.0%
Market Rate	5.0%	38%	31%	24%	16%	8%
	6.0%	43%	36%	30%	23%	16%

Flexible Repayment

- Repayment Sources
- SRF assistance recipients have the flexibility to access income from many sources as repayment for assistance, including:
 - Usage based wastewater bill charges
 - Special assessments
 - Home owner association assessments
 - Stormwater district fees
 - Farming revenues
 - Non-profit membership fees
 - Home owner fees
 - Landfill fees
 - For profit company revenue
 - Property tax revenue

Land Conservation in California

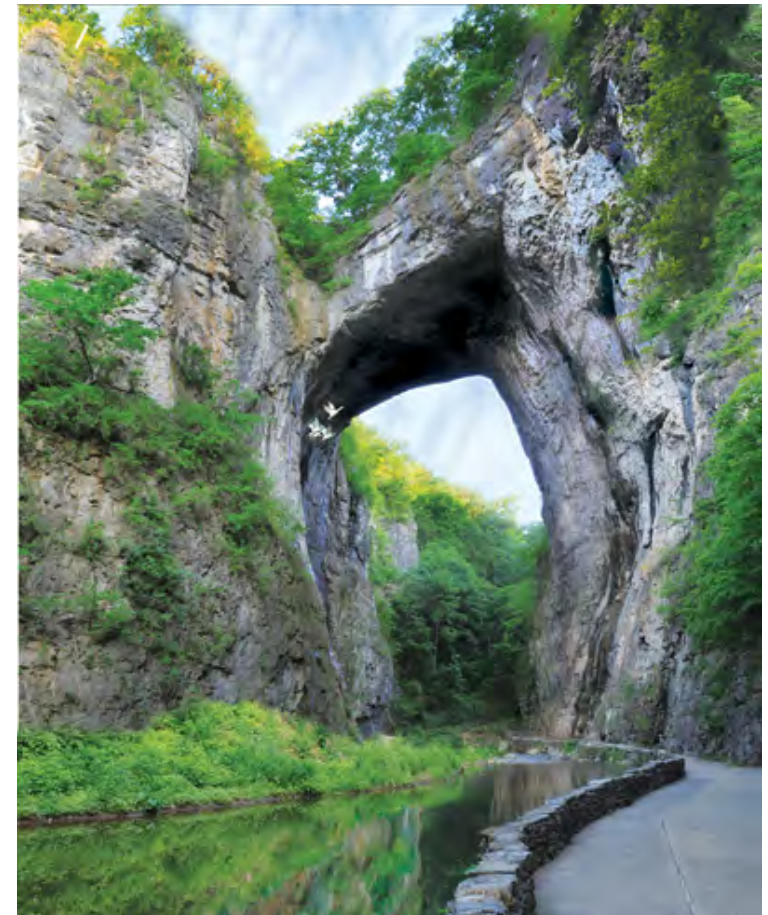
- The Yurok Tribe purchased 22,237 acres on California's Redwood Coast
- \$18.75 million in CWSRF financing
- Repayment source: timber harvest and carbon credits



Park Revenues in DE and VA



Cape Henlopen State Park, Delaware



Natural Bridge Park, Virginia

Sponsorships

- POTWs can sponsor a NPS project in their community in exchange for a reduced interest rate on their CWSRF loan
- No financial impact to the POTW
- Projects without an easily identifiable repayment source get implemented
- States need to judiciously use this tool because it does impact the buying power of the CWSRF

Project	POTW Project Only	POTW Project + NPS Project (Sponsorship)
Project Size	\$1,000,000	\$1,200,000
Interest Rate	2.98%	1.06%
Repayment Amount	\$33,366 (2x / year)	\$33,366 (2x / year)

Interest rate is set so that repayments remain the same

Sponsorship Success in Ohio

Through March 2013, 117 projects restoring and permanently protecting an estimated:

- 143 miles of stream corridor
- 10,000 acres of riparian lands and wetlands
- Total cost of sponsored projects = \$162,500,000



Pond Brook Wetlands Preservation – Metroparks Serving Summit County (2005)

CWSRFs as Match

- Many grant programs require match
- CWSRF may be used as match for grant programs
- Examples:
 - Nonpoint Source (319) Grants
 - National Estuary Program Grants
 - State grant programs

Remember...

- CWSRF Programs are Flexible
 - Can provide many types of assistance
 - Can provide assistance for many project types
 - Can provide assistance to a variety of borrowers
 - Can accept many different income streams for repayment of loans



Questions?

For State CWSRF program contact information, visit:

<http://www.epa.gov/owm/cwfinance/cwsrf/contacts.htm>



Clean Water
State Revolving Fund

Kelly Tucker

U.S. EPA

202-564-0608

tucker.kelly@epa.gov