

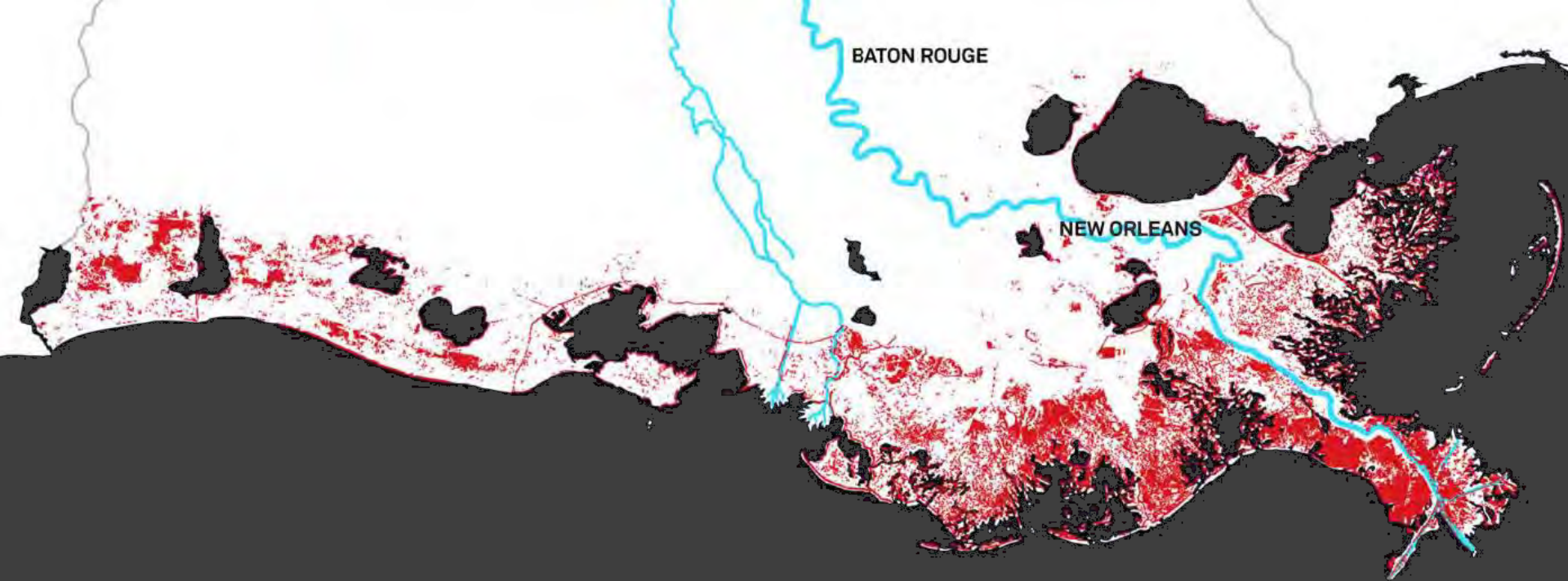


Mississippi River and Tributaries Levee System

“No doubt the great benefit to the present and two or three following generations accruing from a complete system of absolutely protection levees, excluding the flood waters entirely from the great areas of the lower delta country, far outweighs the disadvantages to future generations from subsidence of the Gulf delta lands below the level of the sea and their gradual abandonment due to this cause.”

-E. L. Corthell, National Geographic, December 1897

**Prevented \$612 billion in damages since 1928, a 44 to 1 return
on investment**

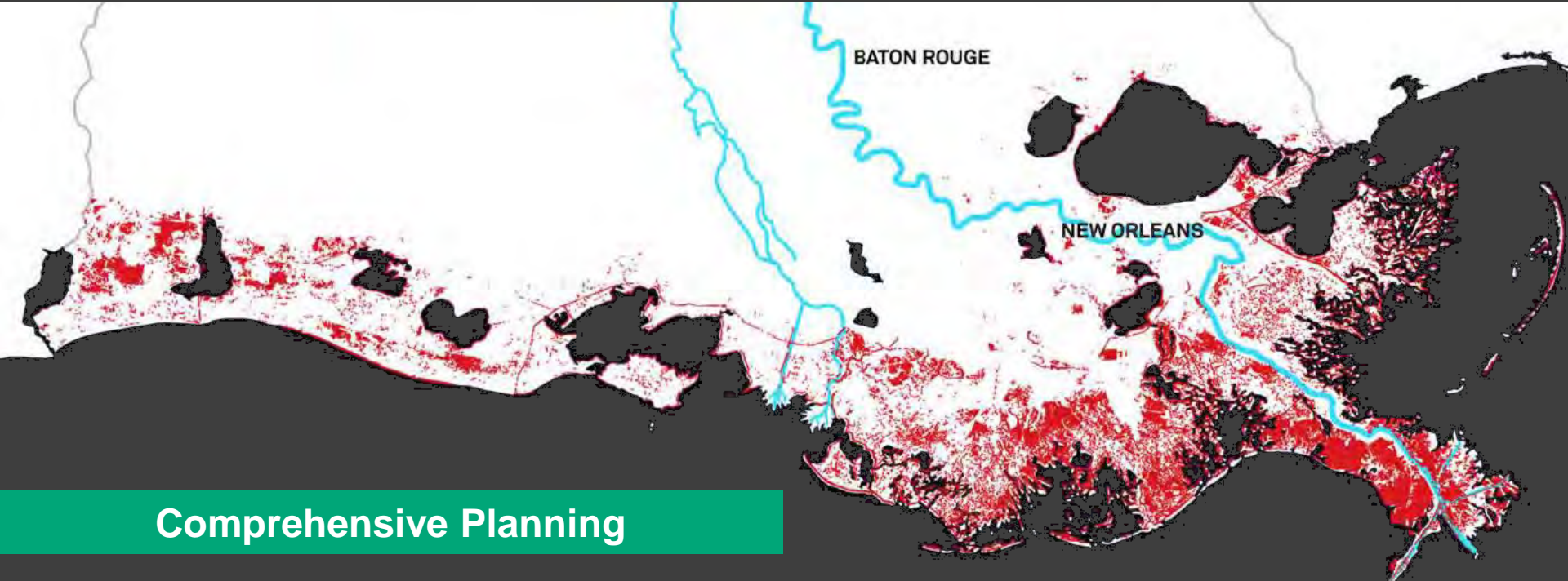


1,900 square miles of land lost since 1930's

Increased vulnerability to hurricanes

Hurricanes Katrina and Rita led to a changes
in how we plan for future challenges





Comprehensive Planning



Levees Wetland Integrated Planning Restoration Non-Structural Protection

Resource Limited Planning

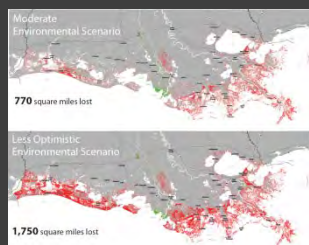


Water

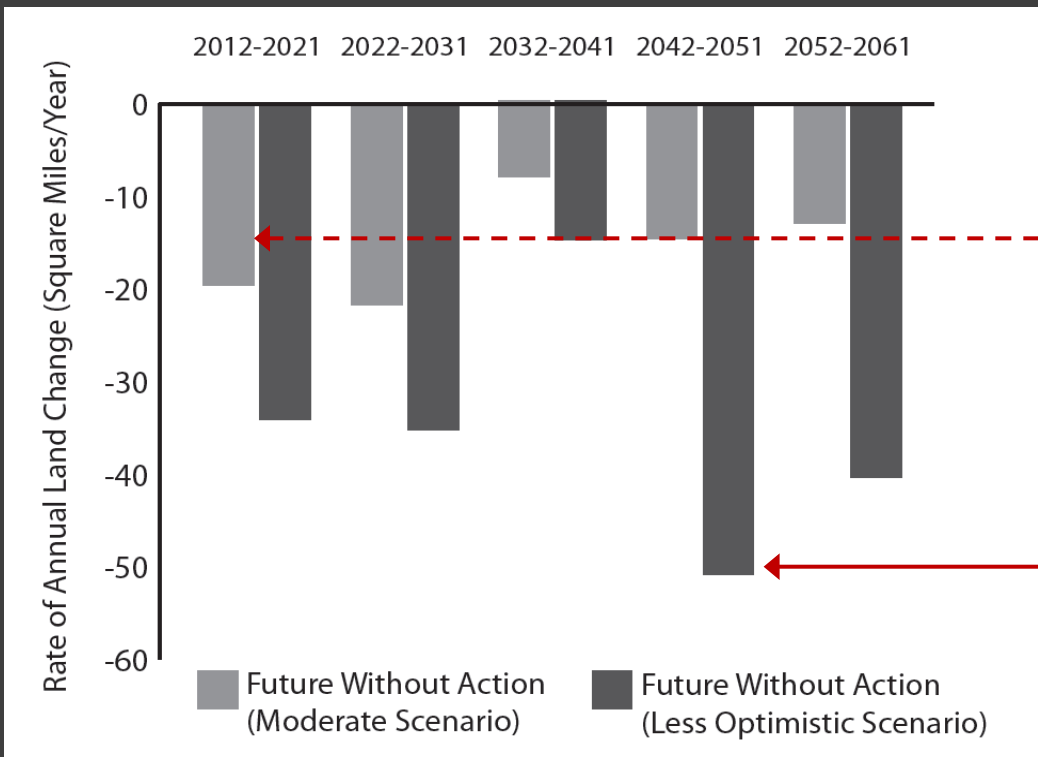
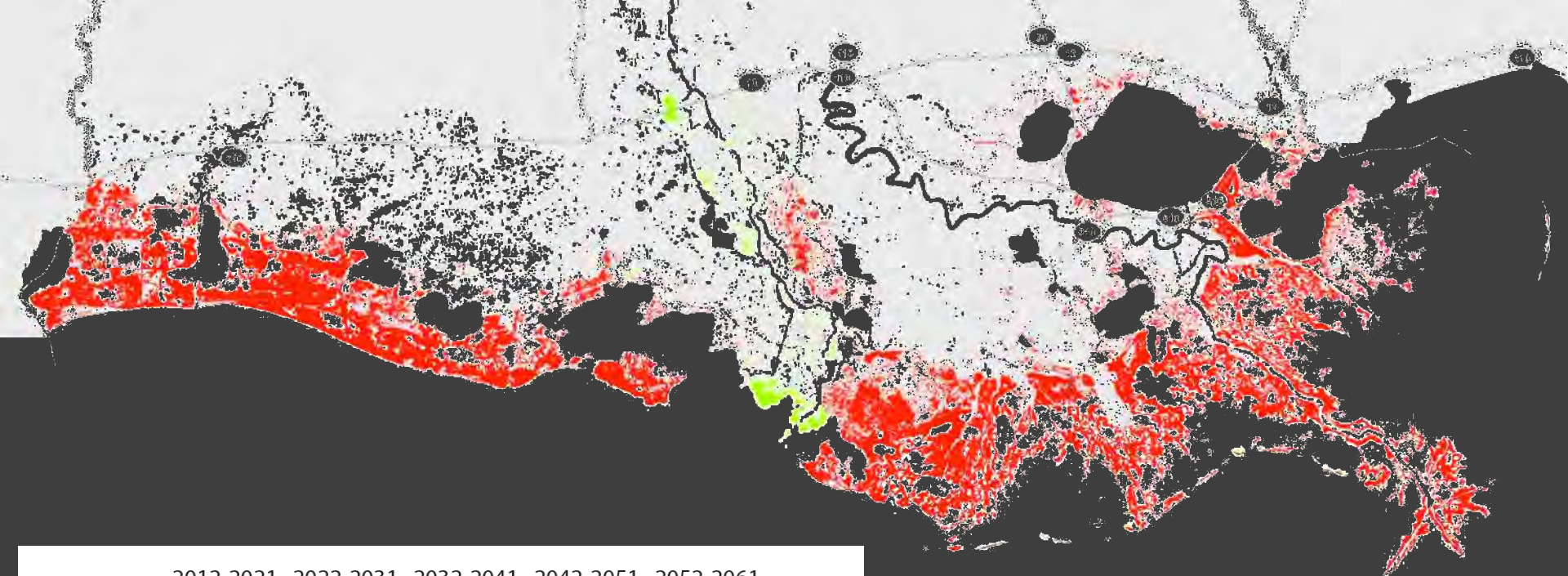
Sediment

Funding

Scenario Planning

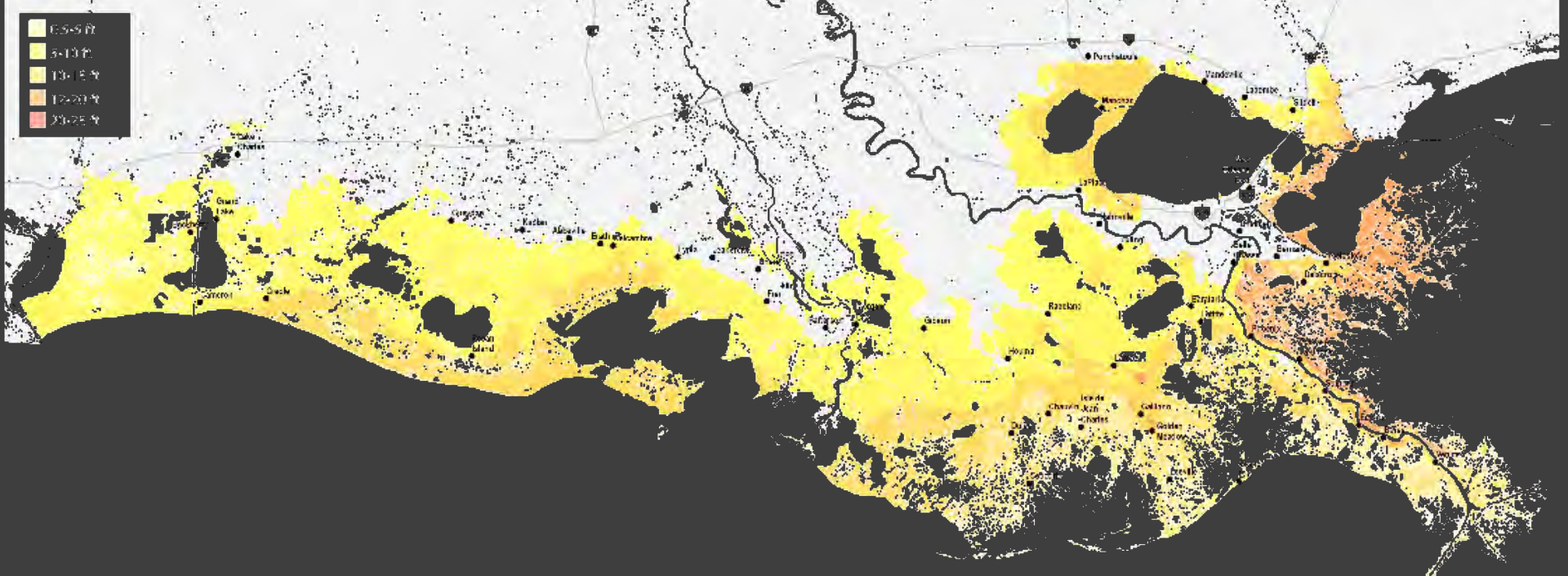


**“Plan for the Worst and
Hope for the Best”**

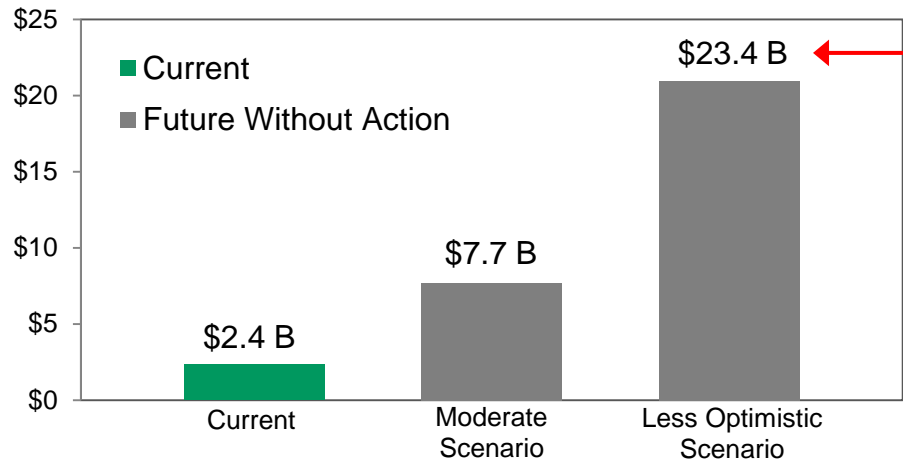


Currently experiencing
16 square miles/year

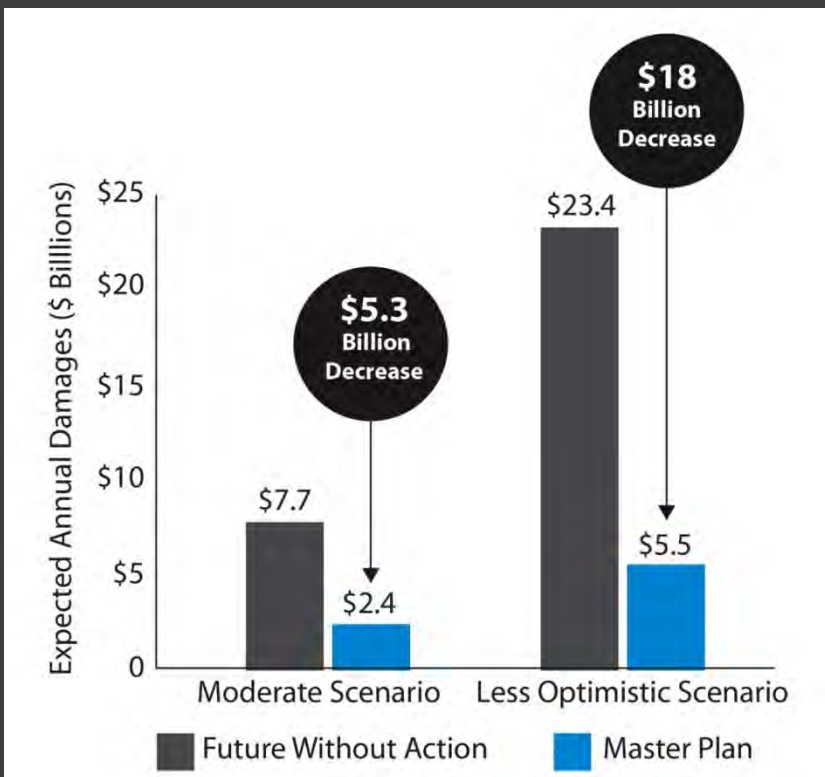
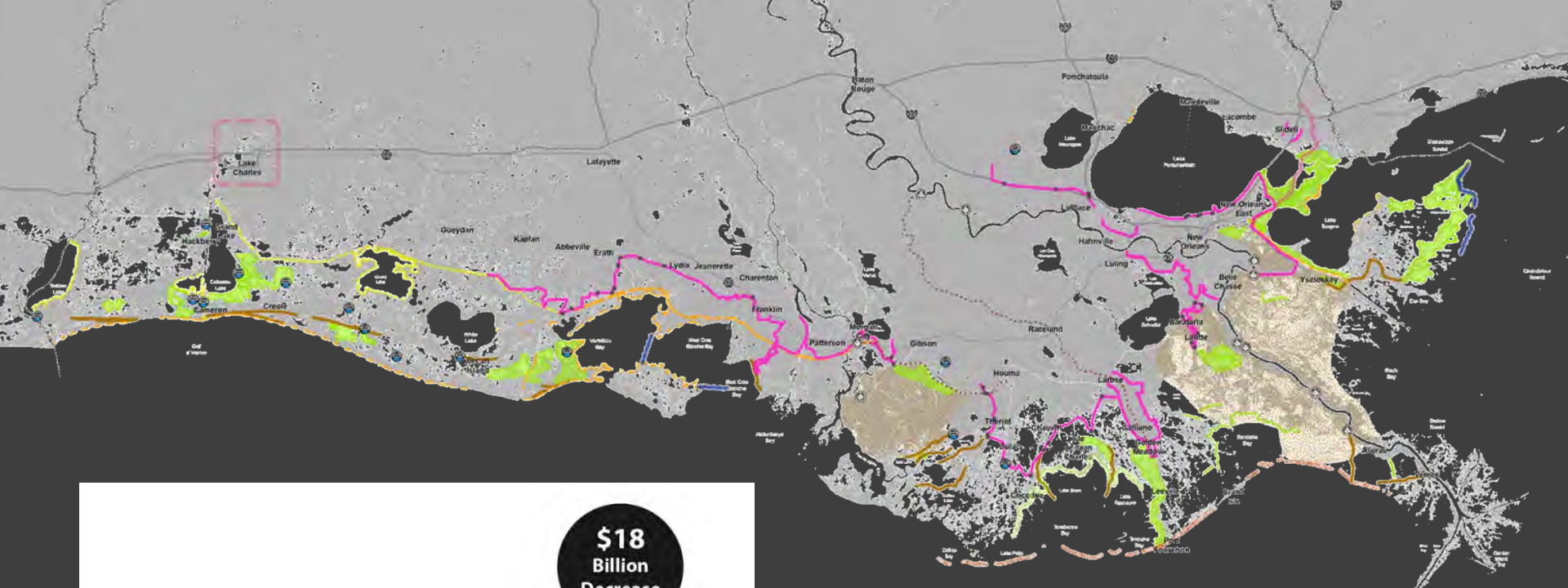
Future could reach
51 square miles/year



Expected Annual Damages (\$ Billions)



Could experience 10x more damages than today



Implementation of the \$50 billion, 50-year plan – a combination of 109 structural, restoration and non-structural projects