

**RECLAIMING OUR WATER INITIATIVE:
*TARGETING THE NITROGEN POLLUTION CRISIS &
RESTORING COASTAL RESILIENCY***

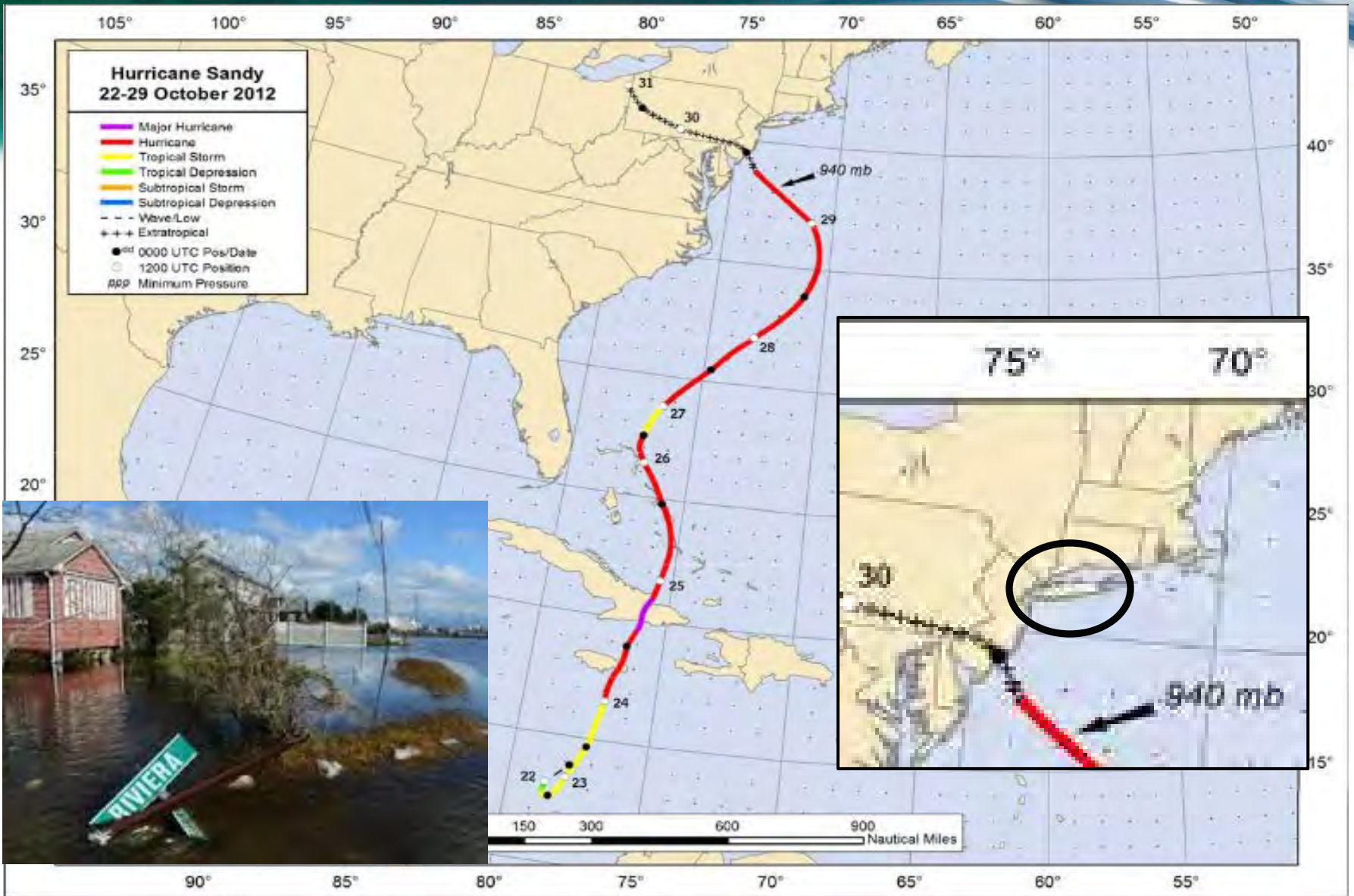
SUFFOLK COUNTY, NEW YORK

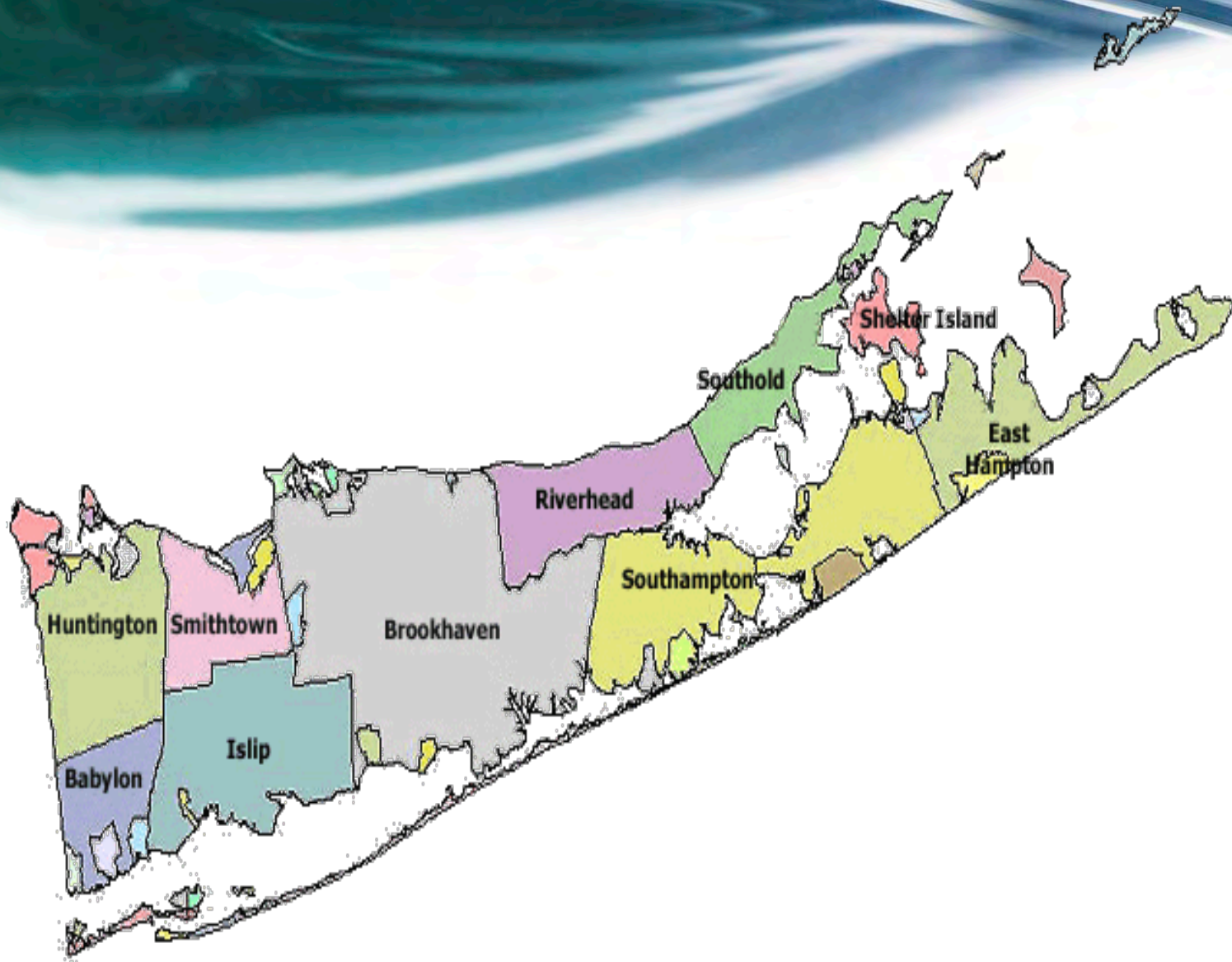
SUFFOLK COUNTY EXECUTIVE STEVE BELLONE

SARAH LANSDALE, AICP, DIRECTOR OF PLANNING

NOVEMBER 5, 2014









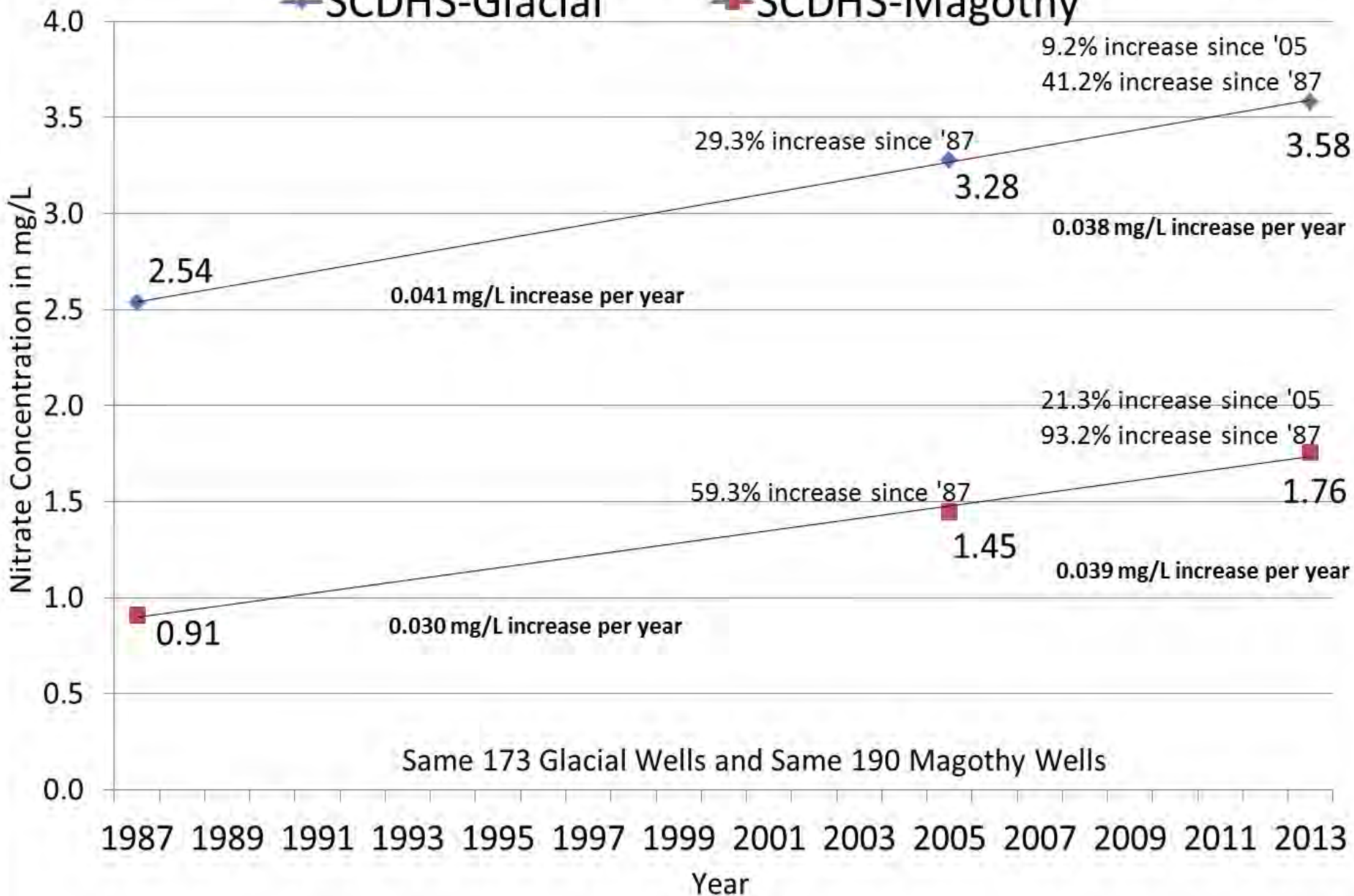
SUFFOLK COUNTY RECLAIM OUR WATER: ACTIONS TAKEN

Collect and Package Data

SCDHS Database Nitrate Averages-Same Wells

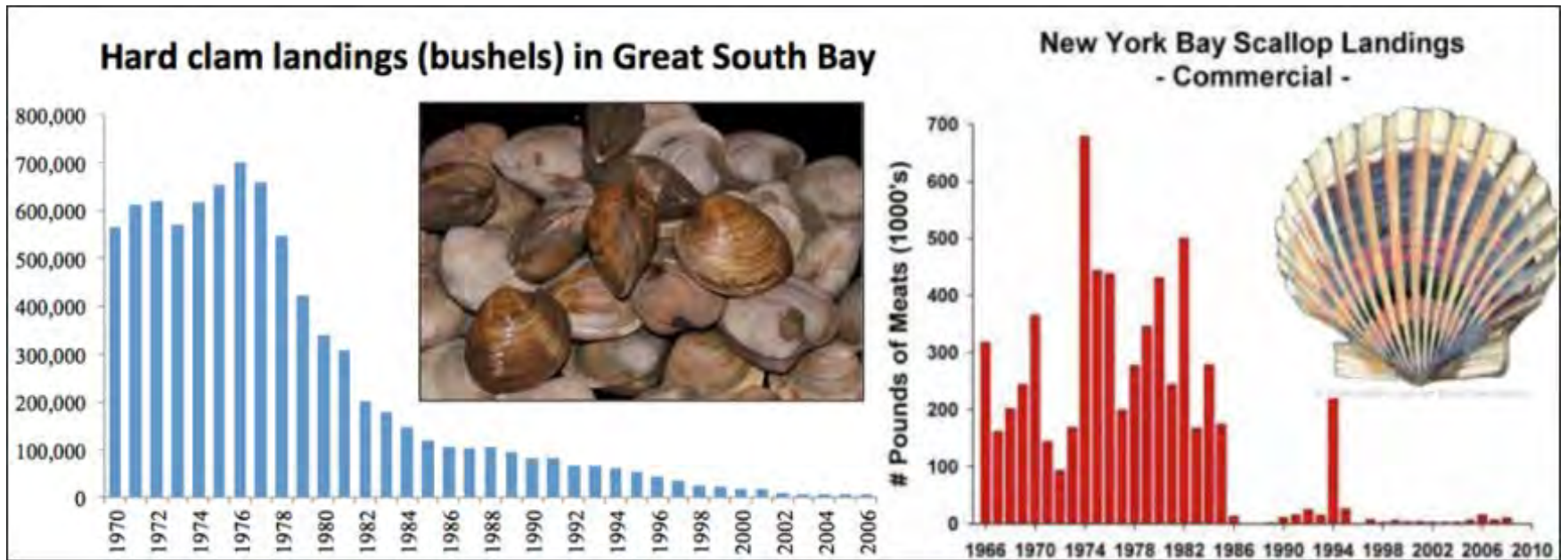
—◆— SCDHS-Glacial

—■— SCDHS-Magothy





COLLAPSE OF FISHING INDUSTRY, ECONOMIC IMPACT





TOURISM ECONOMY



Tourism is one of Long Island's largest industries





Distribution of Coastal Vegetation: 1930



Estimated distribution of eelgrass beds in the South Shore Estuary in 1930 courtesy of Cornell Cooperative Extension of Suffolk County.



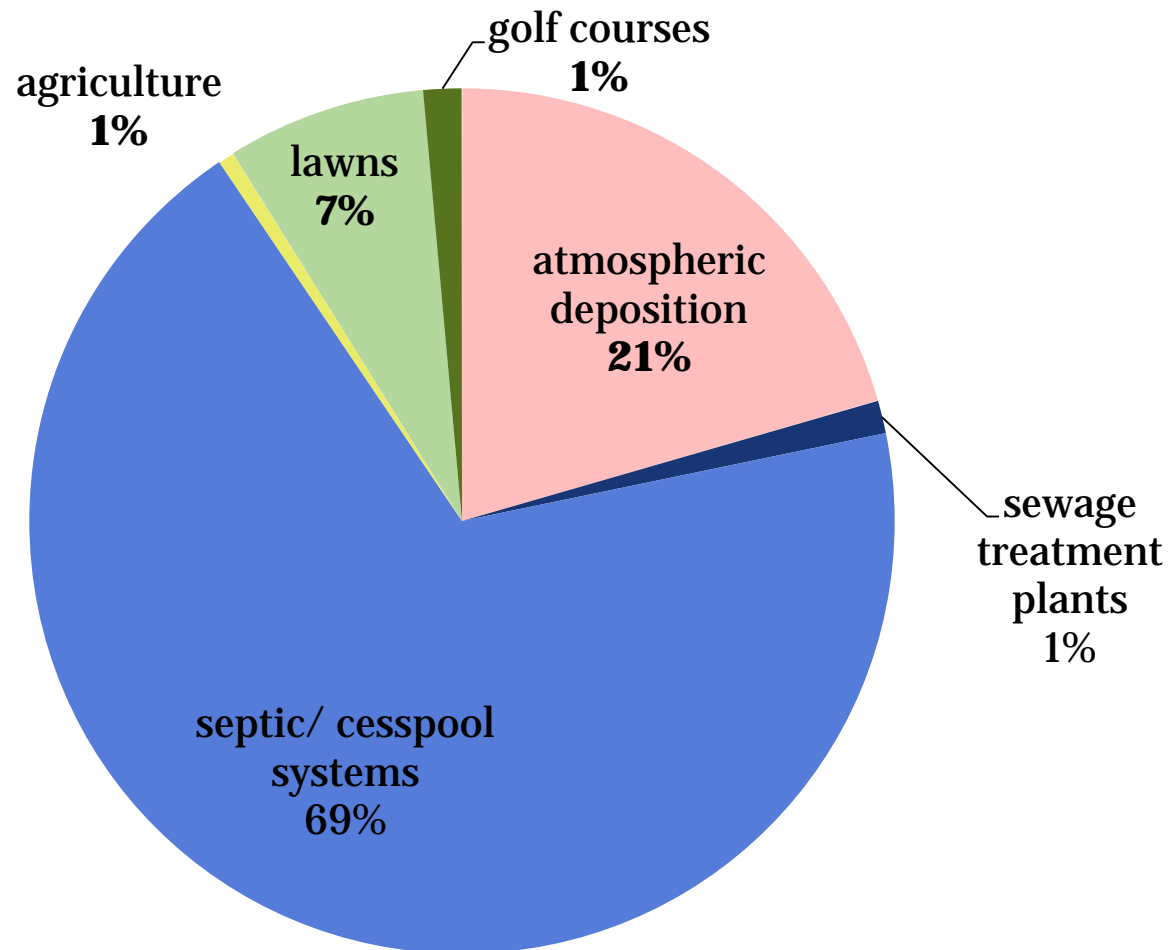
Distribution of Coastal Vegetation: 2012



Estimated distribution of eelgrass beds in the South Shore Estuary in 2012 courtesy of Cornell Cooperative Extension of Suffolk County.



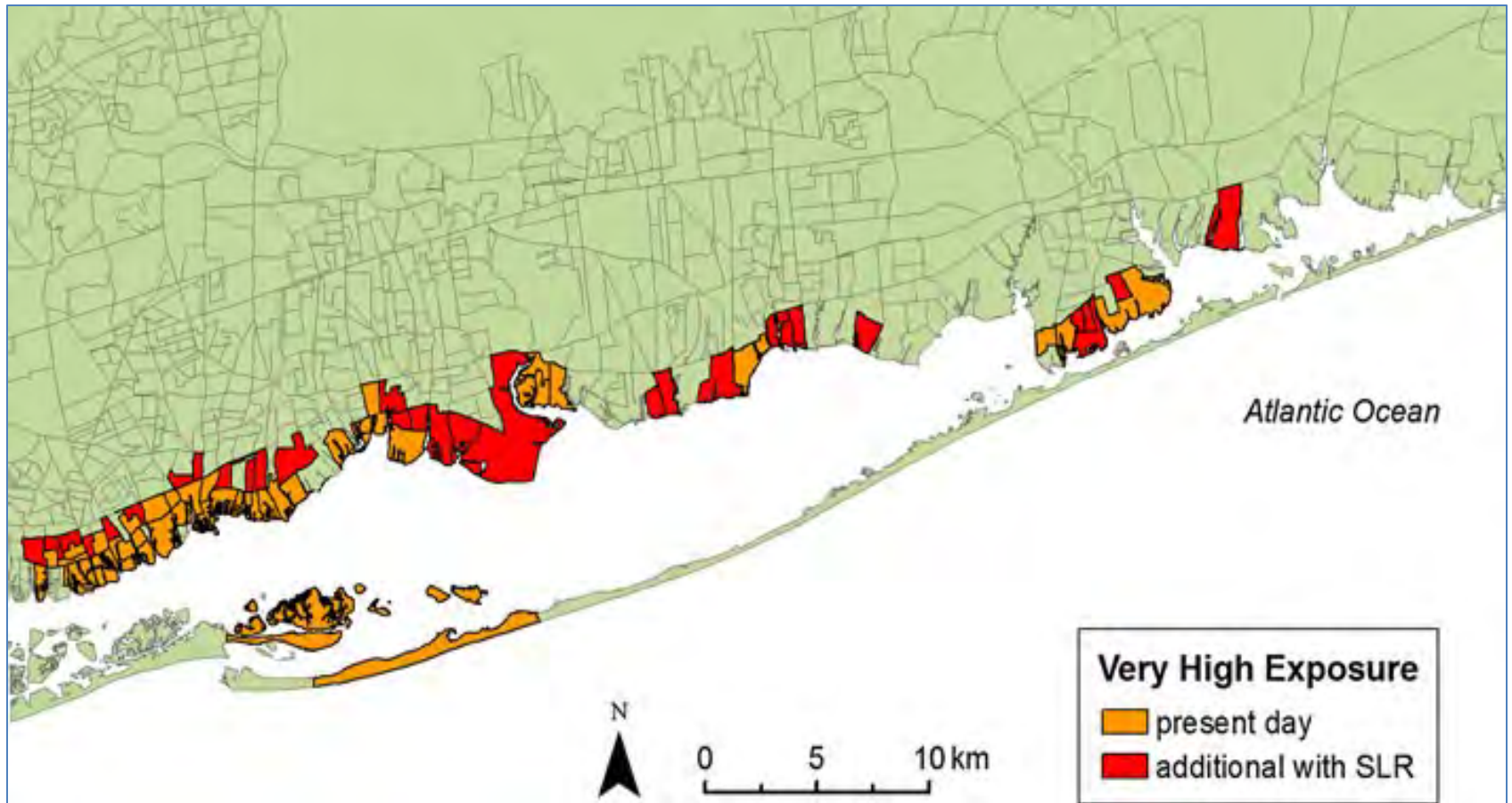
NITROGEN SOURCES IN THE GREAT SOUTH BAY



(source: Kinney, E.L. and Valiela, 2011)



61% OF SUFFOLK COUNTY'S POPULATION LIVES IN THE GREAT SOUTH BAY WATERSHED



Source: "Assessing future risk: quantifying the effects of sea level rise on storm surge risk for the southern shores of Long Island" 2012, Natural Hazards, by Christine Shepard, a postdoctoral fellow with the Nature Conservancy's Global Marine Team



360,000 UNSEWERED HOMES IN SUFFOLK COUNTY





GOVERNOR CUOMO'S NYS 2100 COMMISSION REPORT

NYS 2100 COMMISSION

**Recommendations to Improve
the Strength and Resilience of
the Empire State's Infrastructure**



NYS DEPT. OF ENVIRONMENTAL CONSERVATION



Nitrogen Pollution and Adverse Impacts on Resilient Tidal Marshlands

NYS DEC Technical Briefing Summary



Photo Courtesy of TNC



Photo Courtesy of TNC



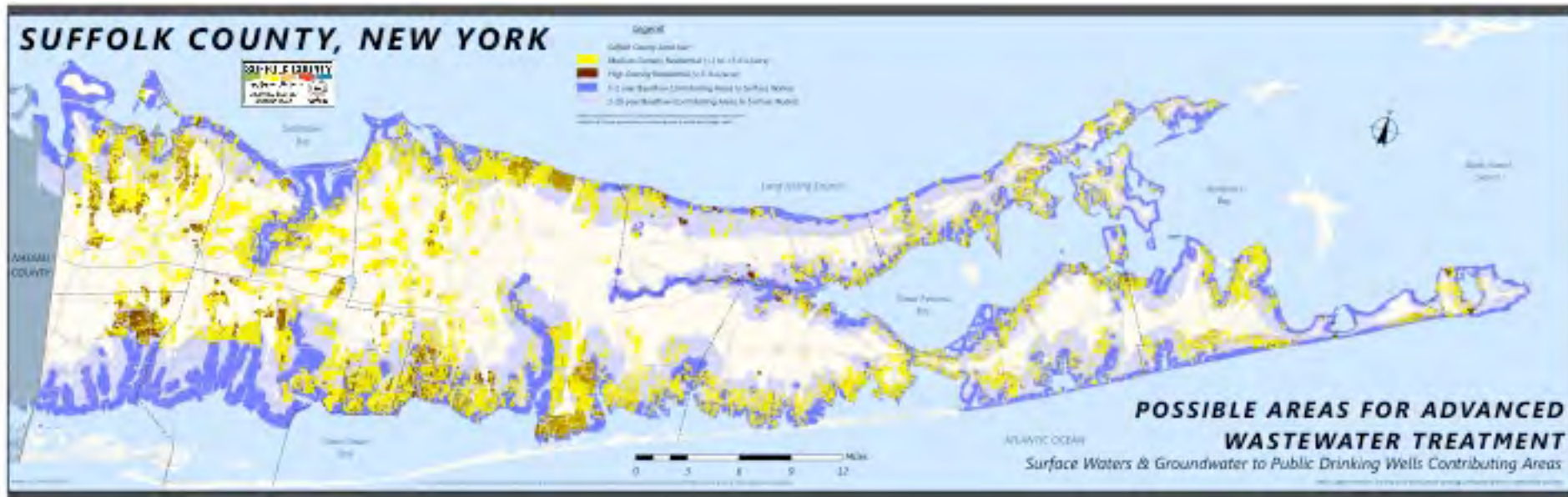
PRIORITIES

Suffolk County has identified four priorities:

- 1. Fortify our existing wastewater infrastructure**
 - 1. Sewer targeted areas**
 - 1. Pilot alternative/innovative on-site wastewater treatment systems**
 - 1. Address agricultural impacts**



ACTIONS TAKEN: PRIORITY AREAS





ACTIONS TAKEN: 2014 STATE OF THE COUNTY





ACTIONS TAKEN: COMMUNITY OUTREACH





ACTIONS TAKEN: MULTI-STATE SEPTIC TOUR



COUNTY OF SUFFOLK



STEVEN BELLONE
SUFFOLK COUNTY EXECUTIVE

REPORT ISSUED BY SUFFOLK COUNTY
DEPARTMENTS OF ECONOMIC DEVELOPMENT & PLANNING, HEALTH SERVICES
AND PUBLIC WORKS

Advanced Wastewater & Transfer of Development Rights Tour Summary

April 28, 2014



ACTIONS TAKEN: IBM SMARTER CITIES CHALLENGE





ACTIONS TAKEN: EDUCATION

crapSHOOT Film Contest:

"Because We Can't Gamble With Our Water Quality"



Coincided with EPA's
Septic Smart Week in Sept



ACTIONS TAKEN: SEPTIC DEMONSTRATION PROGRAM

The screenshot displays the Suffolk County Government website. The header includes the county logo and name, along with navigation links for Home, Government, Office Services, and more. The main content area is titled "Reclaim Our Water Initiative Update" and provides information about the county's efforts to improve septic systems. It includes sections for "Key Dates", "Proposed Regulations for April 2015", and "Application for Part 155 of 155 rules". A sidebar on the left lists various planning topics. Below the text, there are four blue buttons: "Develop a map of PFD Statewide (in Underwater Update System)", "Public Outreach, Outreach, and Program Updates", "State Law Review", "PFD Adoption No. 1 - Goals, and Actions", and "PFD Adoption No. 2 - Amending the Rules, Regulations". At the bottom, there is a map of Suffolk County, New York, with a legend for "Priority Areas for Approval" and "Watering Restrictions".

SUFFOLK COUNTY GOVERNMENT
County Executive: Thomas J. Ichniowski
County Clerk: Robert J. Gagliardi

Reclaim Our Water Initiative Update
Suffolk County Seeks Applications for Onsite Wastewater Treatment System Technologies

Key Dates:
Proposed for Enforcement of Standard released on April 2015
Proposed regulations for April 2015
Operational Construction Starts on Part 155
Application for Part 155 of 155 rules

Background:
Suffolk County is seeking applications from manufacturers for innovative "applications" from throughout the nation for the applicants to demonstrate and demonstrate single family residential onsite wastewater treatment system technologies in Suffolk County not only to the County in participating jurisdictions -- in an effort to test these systems in local conditions. Suffolk County, with a population of 1.5 million is Long Island's most populous county. It is a county of 200,000 existing residential onsite wastewater disposal systems in environmentally sensitive areas which could potentially benefit from state-of-the-art on-site wastewater technologies.

The Program for Innovative Onsite Wastewater (PFD) is part one of a two-part process. The initial PFD seeks from Applicants, the applications for the manufacturing, installation and maintenance of innovative alternative onsite wastewater treatment systems. Applicants will be invited to participate in a series of public hearings. The second part of the process is to use scientific field applications to evaluate, monitor and operate these on-site WWTs. Once the construction is installation of one WWT system, site specific approach (See PFD #1 & 2, PFD #1 & 2)

Develop a map of PFD Statewide (in Underwater Update System)
Public Outreach, Outreach, and Program Updates
State Law Review
PFD Adoption No. 1 - Goals, and Actions
PFD Adoption No. 2 - Amending the Rules, Regulations

SUFFOLK COUNTY, NEW YORK
PRIORITY AREAS FOR APPROVAL
WATERING RESTRICTIONS

Details:
Suffolk County is entering the demonstration program for installing one type of innovative WWTs. The first one that is used by the US EPA Environmental Technology Verification Program (ETV) or the National Sanitation Foundation's Green Patent Standards Initiative (NSF/ISF) awarded 200 existing program (NSF 305) to be demonstrated as a least number of private residential properties. The second type of WWT demonstration of onsite systems not yet installed for ETV/NSF 305 for existing on County managed property which will require the authorization of the County Legislature.



ACTIONS TAKEN: FUNDING SECURED

Governor Cuomo Announces Actions to Strengthen Coastal Resiliency Against Future Storms on Long Island

HOME NEWSROOM PHOTOS 中文 Español Français Kreyòl Ayisyen Italiano 한국어 Русский

Contact Information:
Governor's Press Office
NYC Press Office: 212.881.6849
Albany Press Office: 518.474.8419
press.office@governor.ny.gov

Andrew M. Cuomo - Governor

Governor Cuomo Announces Actions to Strengthen Coastal Resiliency Against Future Storms on Long Island

Print-Friendly Version

\$383 Million for Suffolk County Sewer Projects to Reduce Harmful Nitrogen Pollution, Which Damages Natural Coastal Defenses Against Severe Storms and Flooding

State to Advance \$97 Million to Nassau County to Help Expedite Upgrades to Bay Park Sewage Treatment Plant

State Considering Center for Clean Water Technology at Stony Brook University

Albany, NY (October 28, 2014)

Governor Andrew M. Cuomo today announced a series of actions to bolster coastal resiliency against future storms on Long Island by improving local water quality and reducing harmful nitrogen pollution. Superstorm Sandy significantly impacted Long Island's wastewater treatment facilities and highlighted how vulnerable the region's bays and salt marshes are to excessive nitrogen pollution. To help address these recovery needs, Governor Cuomo announced the State has identified \$383 million in funding for proposed sewer projects in Suffolk County and that the State will advance \$97 million to Nassau County for upgrades to the Bay Park sewage treatment plant.

To help further ensure that the best available science and best practices exist to support resiliency and water quality improvement efforts, Governor Cuomo also announced the establishment of the New York State Center for Clean Water Technology at Stony Brook University – initially tasked with developing and commercializing the next generation of nitrogen removal technology for on-site septic systems and cesspools.

"Superstorm Sandy showed us how important coastal resiliency is to helping Long Island communities withstand the impact of extreme weather. Today we're acting on that lesson and strengthening our natural defenses against future storms," Governor Cuomo said. "I want to thank the many stakeholders who contributed to making these ideas a reality – including County Executive Saltonstall, County Executive Mangano and Supervisor Tricore-Hill – because they are helping to build a safer, stronger and more resilient Long Island."

All of these initiatives will help to continue strengthening Long Island's wastewater treatment systems and reduce nitrogen pollution, which will help protect and improve coastal resiliency. Nitrogen pollution damages coastal marshlands that are a critical line of defense against severe storms and flooding.

\$383 Million for Suffolk County Projects

Governor Cuomo today identified up to \$383 million for four proposed resiliency and water quality projects to extend sewers in Suffolk County in four areas, which County Executive Saltonstall advanced. Subject to federal approval, the State has identified up to \$300 million in Community Development Block Grant Disaster Recovery funding and \$83 million to be financed through low-interest loans from the Clean Water State Revolving Fund administered by the New York State Environmental Finance Corporation and the Department of Environmental Conservation.

The extension of sewers to these areas is an important step to help Suffolk County recover from Superstorm Sandy and will dramatically



FINAL THOUGHT

“Clean water should be the birthright of every Long Islander and it’s time we tackle this crisis together and Reclaim our Water.”

**-Steve Bellone, Suffolk County Executive
2014 State of the County**