

# Opening their Shells

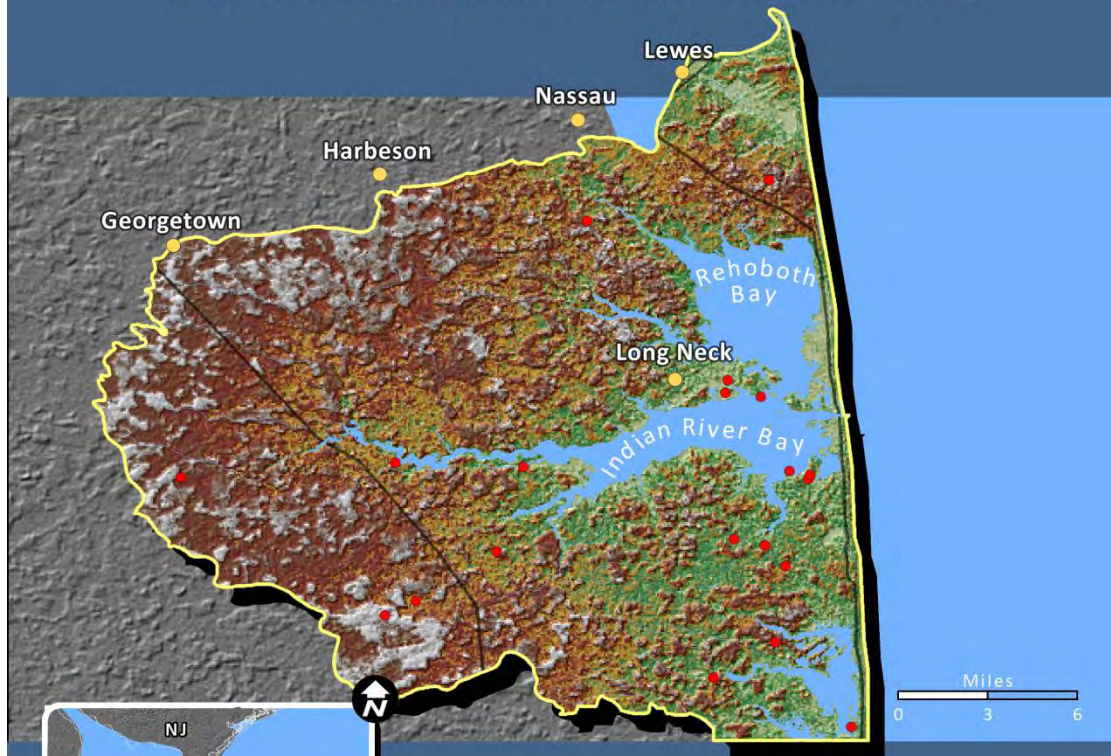
*Getting commercial clammers involved  
in marine spatial planning using the weTable*

**Ed Lewandowski**

**Coastal Communities Development Specialist  
University of Delaware/Delaware Sea Grant**



# DELAWARE CENTER FOR THE INLAND BAYS



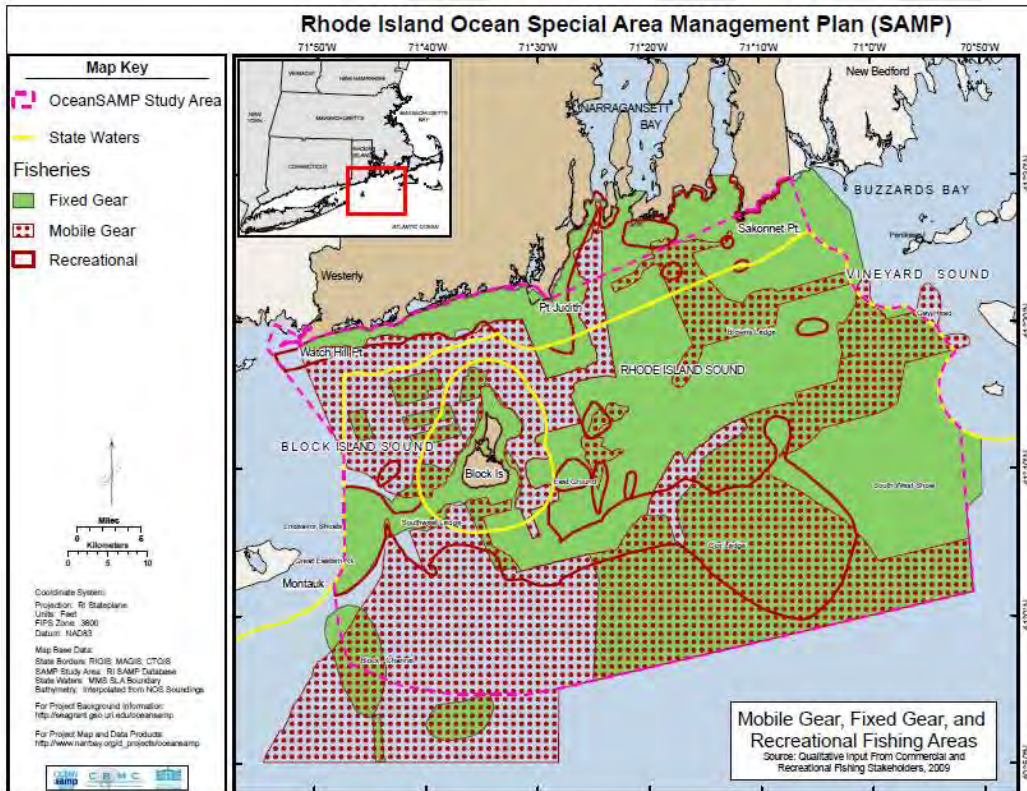
**LEGEND**

- NEP Study Area
- Habitat Projects with Photos
- Habitat Project Locations
- Cities
- Major Roads

**Elevation**

The elevation scale is a vertical color gradient bar. At the top, labeled 'H' for High, is a brown color. The color transitions through orange and yellow to green at the bottom, labeled 'L' for Low.

## Rhode Island SAMP



- Presentation at Social Coast Forum in FEB '12  
*“Engaging Stakeholders in Marine Spatial Planning”*
- Worked primarily with New England’s ground fishing industry
- Used printed maps, crayons & markers, sticky notes, etc.
- Numerous data layers, so printed numerous maps

## Human Use Data

- *Navigational channels*
- *Historic channel dredging*
- *Marinas*
- *Public & private boat ramps*
- *Duck blinds*

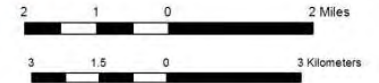


## Regulatory Data

- *Shellfish harvest closures*



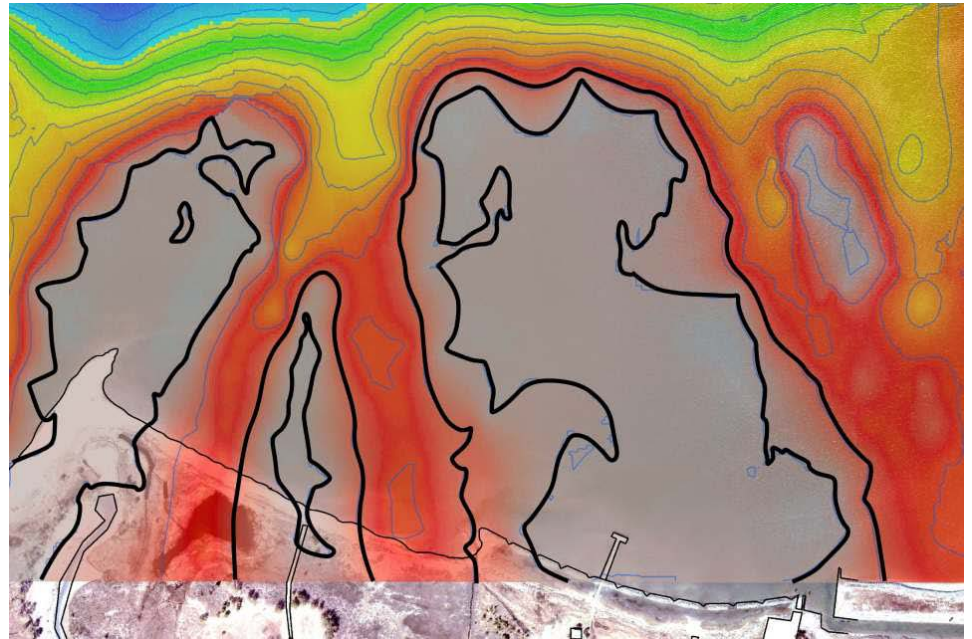
### DNREC Clam Harvest Closures



**Oyster Aquaculture  
Tiger Team**

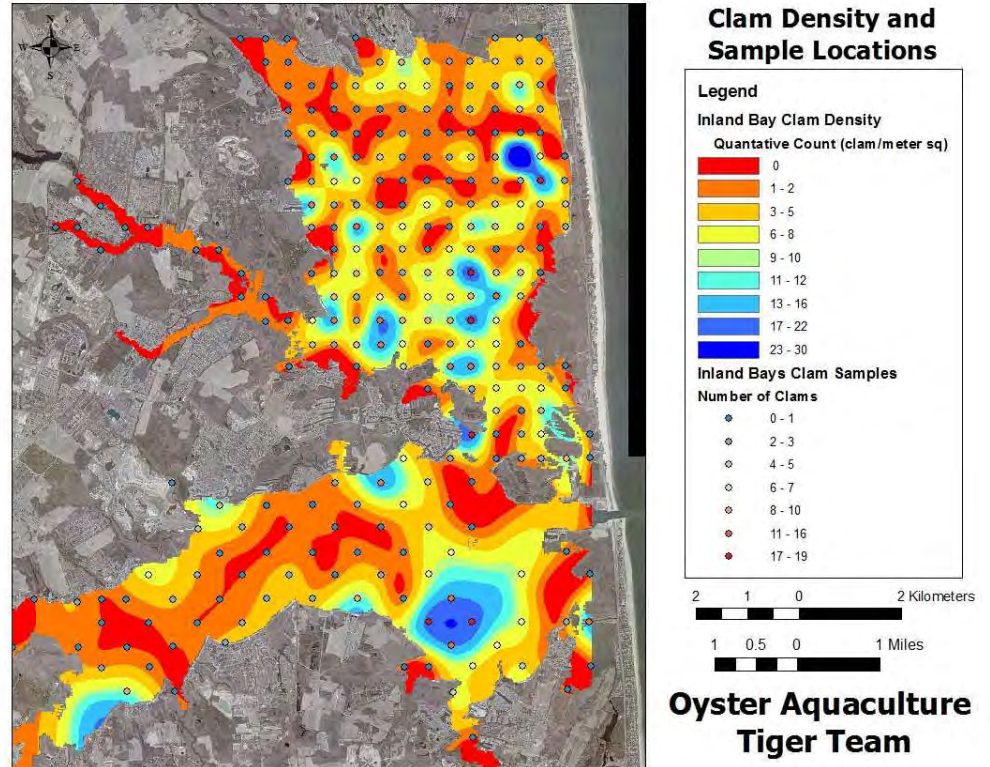
## Physical Data

- *Bathymetry*
- *Bottom sediment classifications*



## Ecological Data

- *Clam abundance (density)*
- *Seasonal colonial nesting bird habitat*



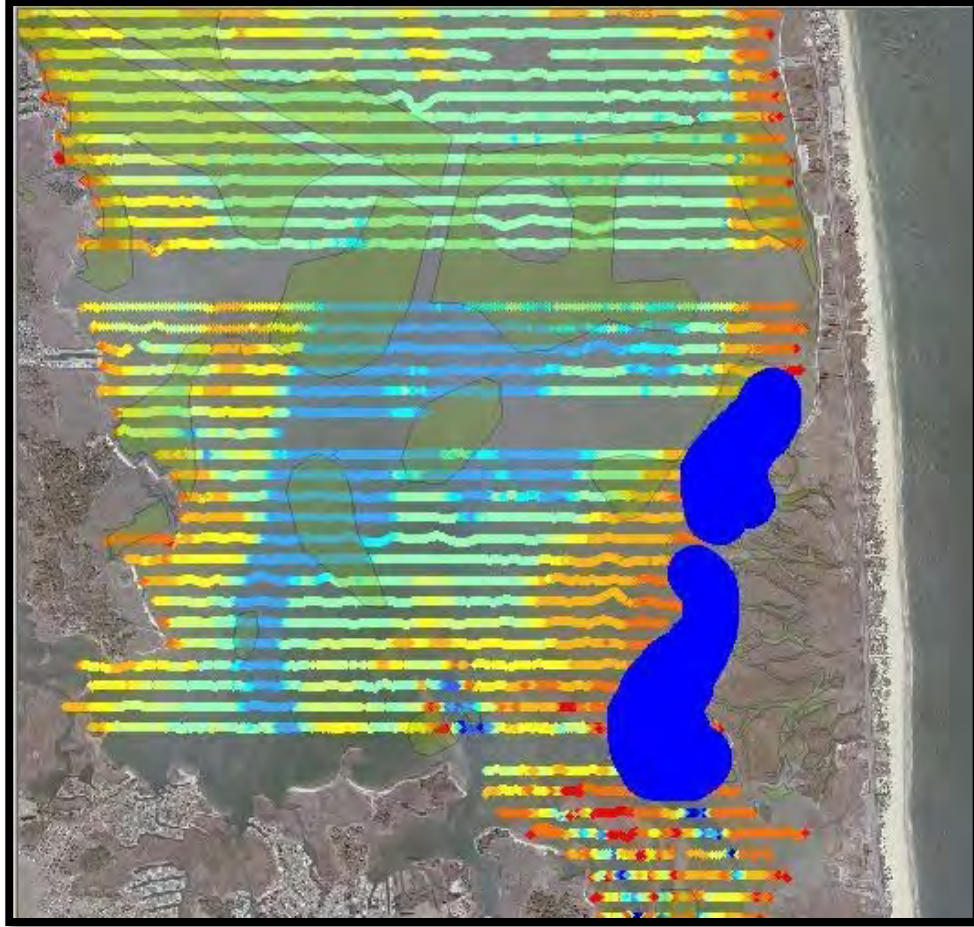


Bart Wilson, Science Coordinator for the CIB,  
moderated the public engagement session





Several of the local commercial clammers  
and their family members participated



Bob's *weTable* markup

## Preferred Use Areas

- *Low clam density (< 2 clams/m)*
- *Low boat traffic*
- *Open to harvest*
- *Little to no current commercial harvesting activity*
- *Limited waterfowling activity*
- *No shoreline residences*



### Rehoboth Bay Potential Aquaculture Lease Area

#### Legend

Potential Aquaculture Lease Area v4

Total Area:

166 Acres

2.8% of the total Rehoboth Bay area

1 0.5 0 1 Kilometers

1 0.5 0 1 Miles



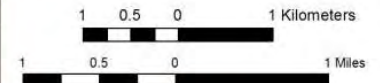
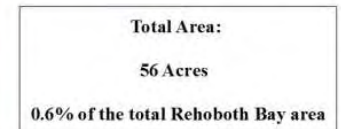
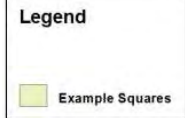
**Oyster Aquaculture  
Tiger Team**

## Leased Areas Example

- *Created a map that depicts the proposed area with a variety of lease sizes and configurations*
- *Visual representation of the immediate geospatial impacts of the aquaculture activity on surface waters*
- *Helped to allay many fears that bays would be consumed with leases*



### Rehoboth Bay Aquaculture Leased Area Example



**Oyster Aquaculture  
Tiger Team**