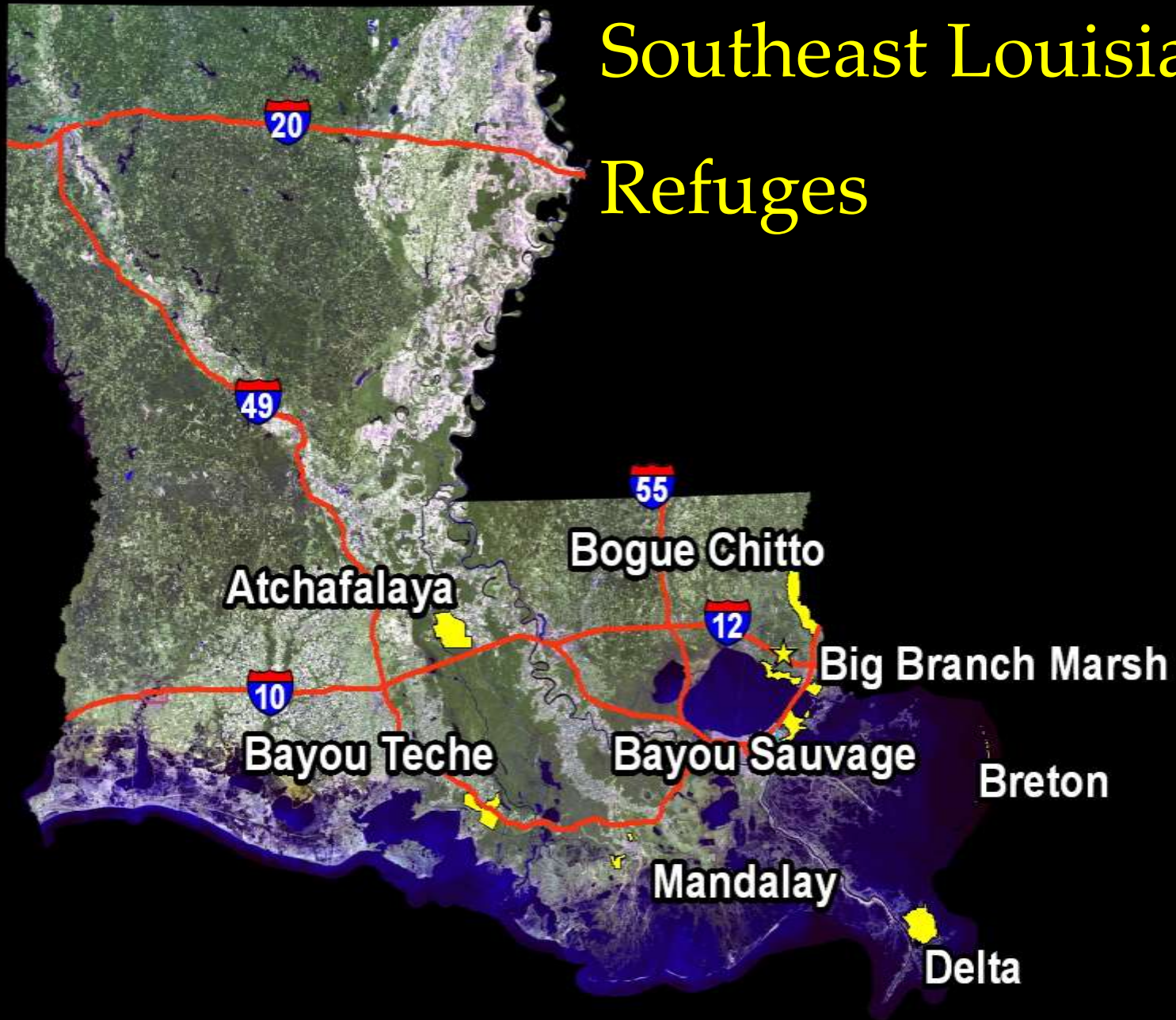


# Southeast Louisiana Refuges





Bayou Sauvage National Wildlife Refuge is 25,000 acres of marsh, swamp, and bottomland hardwood forest along Lake Pontchartrain and Lake Borgne.

The Coastal Education and Research Facility of the University of New Orleans is situated just outside the Refuge.

Both are located within the City limits of New Orleans.



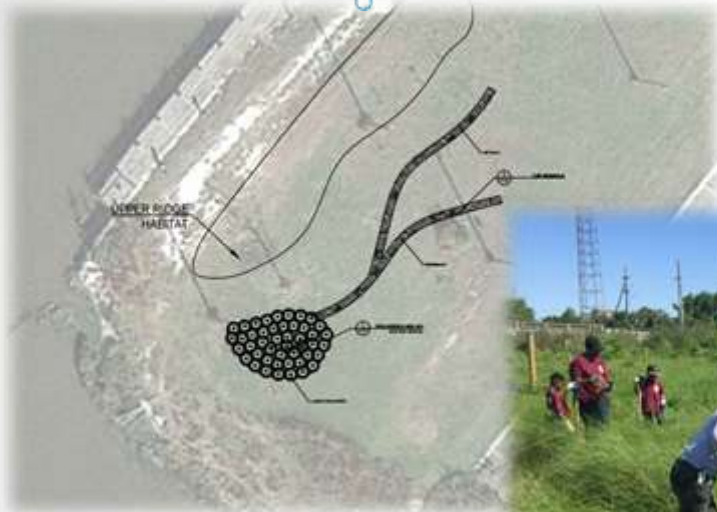
# Habitat Is Where It's At!



THE UNIVERSITY of  
**NEW ORLEANS**



# Green Infrastructure





Coastal Roots schools provided 400 cypress trees for planting



700 students and 300 volunteers participating in structured service-learning activities to complete habitat restoration projects both on the Refuge and at CERF.

FRIENDS OF LOUISIANA



WILDLIFE REFUGES, INC

