



Planning for Adaptation: State of Florida's Perspective

Sean Reiss, *Bureau of Community Planning*



December 13, 2016

Community Resiliency Initiative

Partners:



- Part of the Florida Coastal Management Program (FCMP)
 - DEO is a networked partner in a multi-agency coastal management effort
 - Builds upon previous FCMP five-year resiliency strategies
 - Waterfronts Florida
 - Post-disaster Redevelopment Planning

Community Resiliency Initiative Goals

Working to help local governments:



- Understand current and future flood risk and identify areas at risk
- Examine policy options and tools for integrating coastal resiliency into existing planning processes
- Implement statutory language
- Share the results and lessons learned

What We Are Doing

- Building partnerships: statewide focus group and state agency sub-group
- Developing guidance materials:
 - Technical assistance
 - Integrating adaptation into current planning and development processes
- Pilot projects: Adaptation Action Areas (AAA) Project of Special Merit and three adaptation pilot communities

Adaptation Pilot Projects

Pilot projects demonstrate planning options available to local governments

- How can we assess vulnerability to current and future coastal flooding?
- How can we design and implement adaptation policies?

Adaptation Pilot Projects

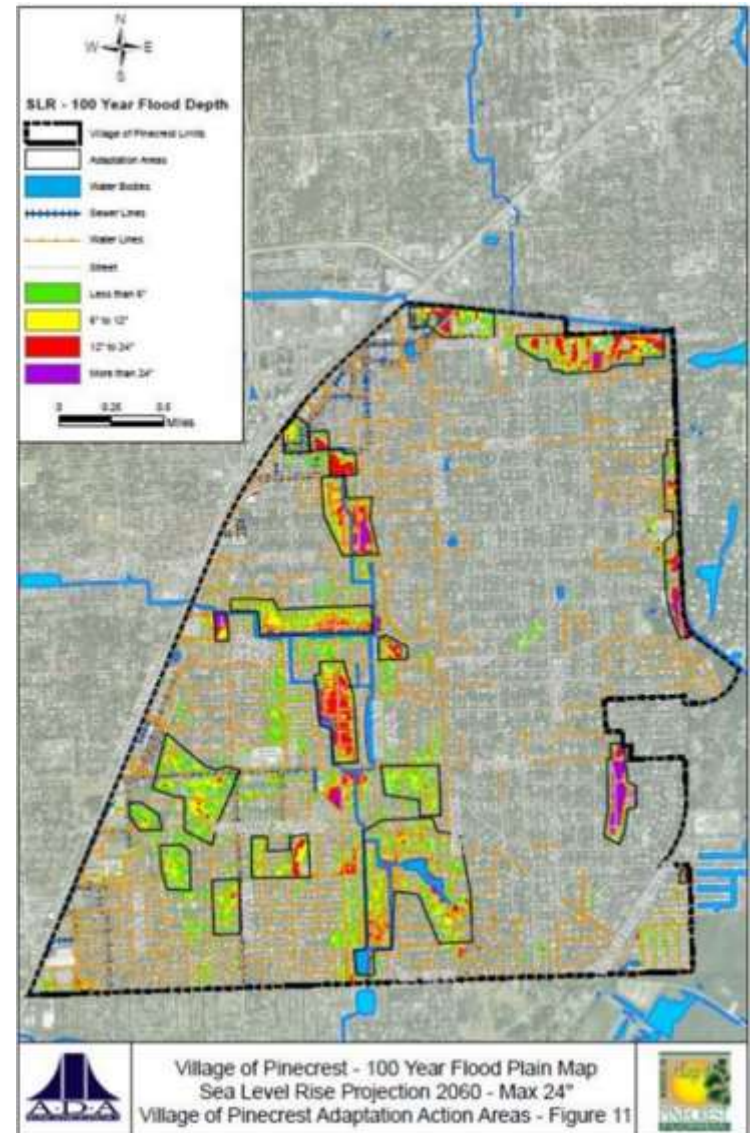
Past: Adaptation Action Areas Project of Special Merit – Fort Lauderdale & Broward County

Current: Three Adaptation Pilot Local Governments

- City of Clearwater
- Escambia County
- City of St. Augustine

Policy Tool: Adaptation Action Areas

- Framework for adaptation planning and prioritizing infrastructure investments
- Optional designation for areas experiencing or are vulnerable to current and future coastal flooding
- Significant flexibility in how a local government can develop and implement AAAs



Policy Tool: Adaptation Action Areas

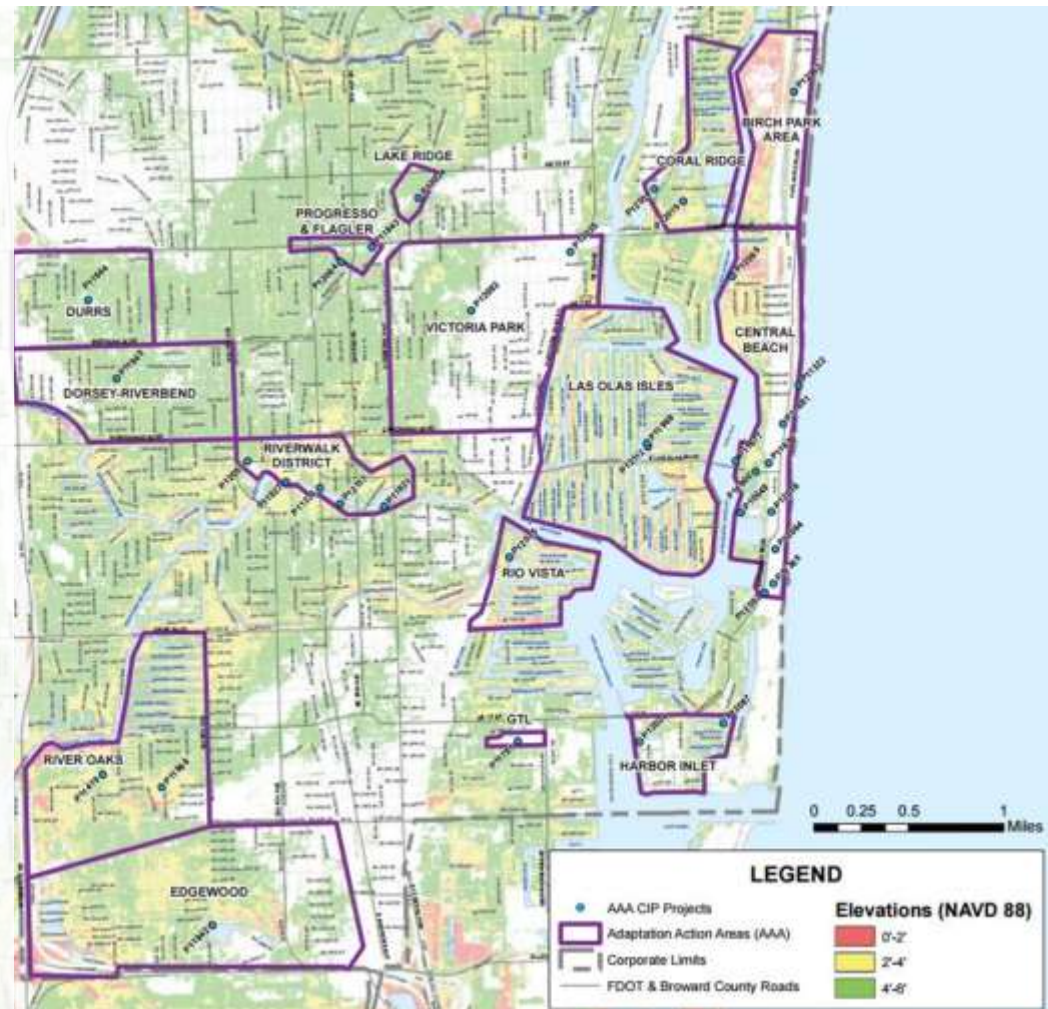
- Addresses coastal adaptation in the comprehensive plan and paves the way for integration with related plans and implementation processes:
 - Capital Improvements Plan
 - Local Mitigation Strategy
 - Stormwater Management Plan
 - Visioning processes and strategic plans

Fort Lauderdale AAA Pilot

Designated 16 AAAs and 38 projects for funding in the City's Community Investment Plan (CIP)

Focused on action:

- Took existing CIP projects and budgeted them as adaptation projects
- Projects include stormwater and seawall improvements



Fort Lauderdale AAA Pilot

Ingredients for success:

- Supportive leadership
- Clear, consistent, and transparent communication
 - “speak with the community early and often”
- Be attentive and responsive to signals for how fast or slow people are willing to go
- Focus on what we are already doing to be resilient
 - “We Are Ready” to handle this challenge
 - Incremental process for building community capacity for future efforts
- Flexible policy language
 - Non-prescriptive so it is adaptable over time

Statewide Challenges and Takeaways

Sea level rise adaptation requires a long-term approach

- Integrates complex science with local policies and plans
- Communicating the present-day benefits of beginning adaptation now
- Lay the groundwork for adaptation by seeking out projects that have present benefits

Statewide Challenges and Takeaways

Florida communities are diverse

- Varying needs, capacities, and local contexts
- One size fits all approach does not work

Smaller local governments need more assistance

- Lack staff capacity and funding



Thank You.

If you have questions or comments about this presentation or need to discuss a future project; please contact our office.

<http://www.floridajobs.org/adaptation-planning>



Sean Reiss, Bureau of Community Planning, DEO

Main Line: 850-717-8511

Email: *Sean.Reiss@deo.myflorida.com*