



LONG ISLAND SOUND
PARTNERSHIP



What's new with the 2025 CCMP?

Nikki Tachiki, EPA Region 2

Jimena Perez-Viscasillas, New York Sea Grant

Abbie Winter, CT DEEP



What is the LIS Partnership?



- | | | | |
|--|--|--|---|
| 1 Casco Bay Estuary Partnership | 8 New York - New Jersey Harbor Estuary Program | 15 San Juan Bay Estuary Program | 22 Coastal Bend Bays and Estuaries Program |
| 2 Piscataqua Region Estuaries Partnership | 9 Barnegat Bay Partnership | 16 Coastal and Heartland National Estuary Partnership | 23 Santa Monica Bay National Estuary Program |
| 3 Massachusetts Bays National Estuary Program | 10 Partnership for the Delaware Estuary | 17 Sarasota Bay Estuary Program | 24 Morro Bay National Estuary Program |
| 4 Buzzards Bay National Estuary Program | 11 Delaware Center for the Inland Bays | 18 Tampa Bay Estuary Program | 25 San Francisco Estuary Partnership |
| 5 Narragansett Bay Estuary Program | 12 Maryland Coastal Bays Program | 19 Mobile Bay National Estuary Program | 26 Tillamook Estuaries Partnership |
| 6 Long Island Sound Study | 13 Albemarle-Pamlico National Estuary Partnership | 20 Barataria-Terrebonne National Estuary Program | 27 Lower Columbia Estuary Partnership |
| 7 Peconic Estuary Partnership | 14 Indian River Lagoon National Estuary Program | 21 Galveston Bay Estuary Program | 28 Puget Sound Partnership |

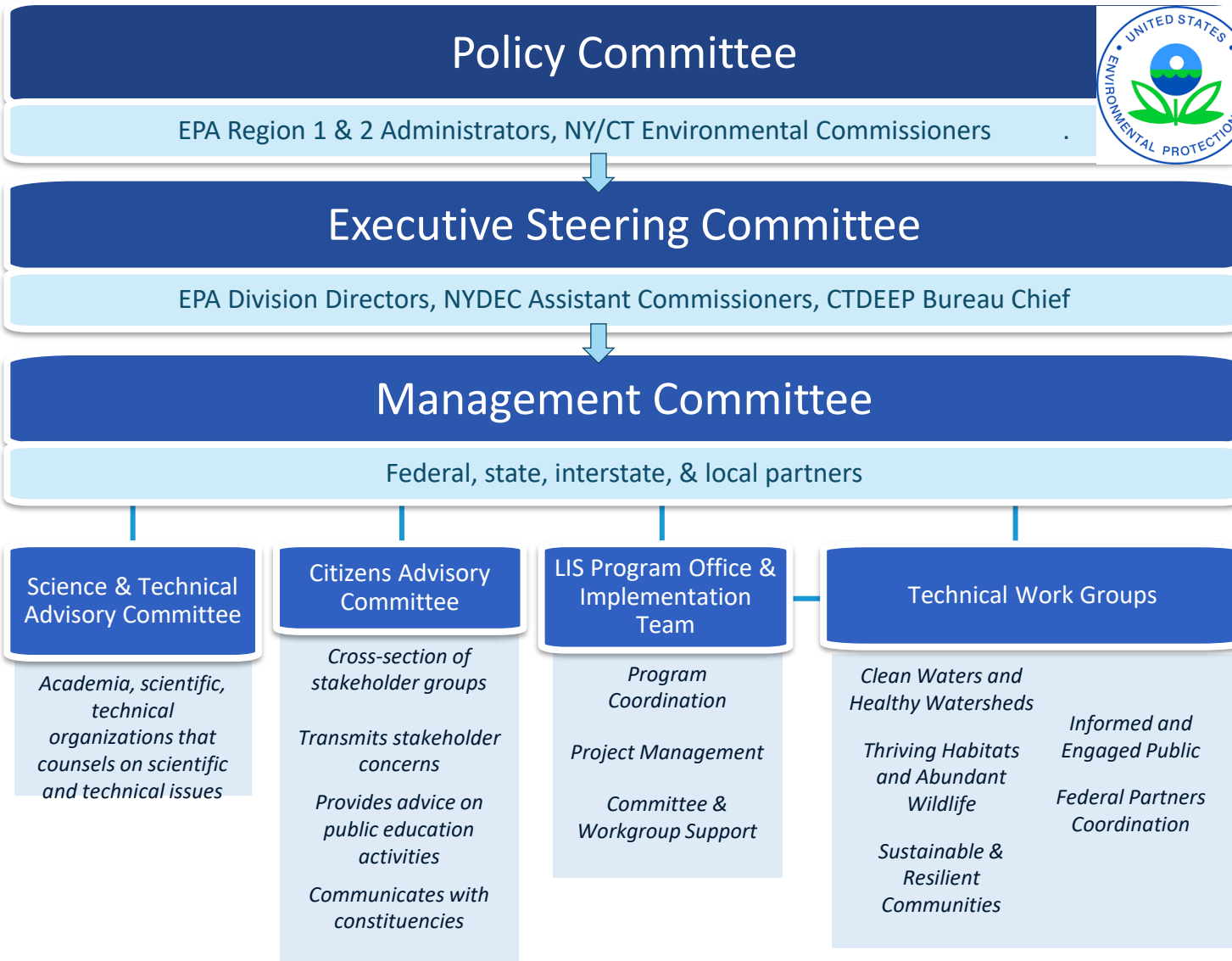
What is the LIS Partnership?



EPA, New York, and Connecticut formed the **Long Island Sound Partnership** (previously Long Island Sound Study) in 1985, a bi-state partnership consisting of federal and state agencies, user groups, concerned organizations, and individuals dedicated to restoring and protecting the Sound.



What is the LIS Partnership?



US Army Corps of Engineers.





Image courtesy of Dr. Beth Lawrence, UConn

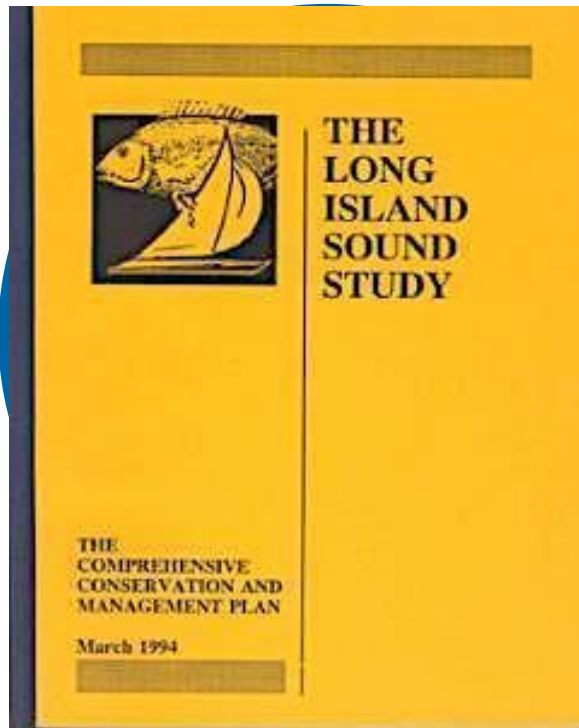
- The **Long Island Sound Comprehensive Conservation and Management Plan (CCMP)** outlines goals, objectives, and actions to restore and maintain the health of Long Island Sound and its watershed (the lands and waterways that drain into the Sound).
- The Long Island Sound Partnership (LIS Partnership) uses the CCMP to guide its conservation work around Long Island Sound.

The LIS Partnership uses the CCMP to guide its conservation work around Long Island Sound through implementation and **funding**

- **Long Island Sound Community Impact Fund (LISCIF – *why we're here today!*)**
 - Run by: Shahela Begum, Restore America's Estuaries
 - Provides technical and financial assistance to environmentally distressed communities, to address environmental health impacts and to improve the quality and accessibility of the Long Island Sound
- **Long Island Sound Futures Fund**
 - Run by: Carrie Clingan, National Fish and Wildlife Foundation (NFWF)
 - Different funding ranges for implementation, design/planning, & education projects
- **Long Island Sound Partnership Research Grant Program**
 - Run by: NY Sea Grant and CT Sea Grant
 - Funds applied research
- **Long Island Sound Resilience Assistance Programs**
 - Run by: NY Sea Grant and CT Sea Grant
 - Provides funding for planning support and grant writing support to help apply for sustainable and resilience-focused projects

For more information and more funding opportunities, visit: <https://lispartnership.org/about/grants/> and <https://www.lisresilience.org/funding-database/>

1994 Management Plan



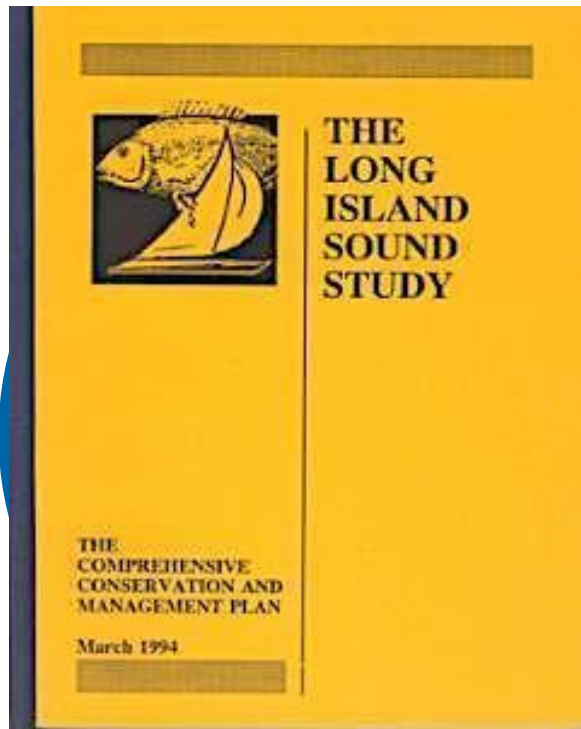
2015 Revision



2025 Revision



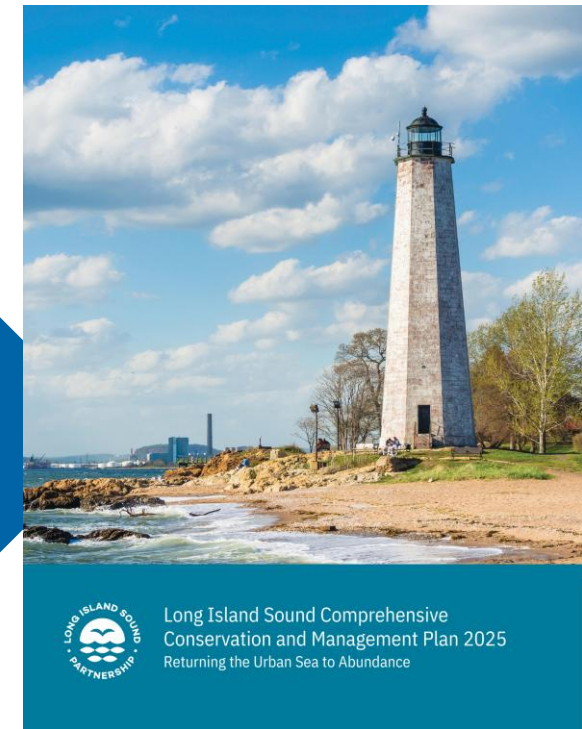
1994 Management Plan



2015 Revision



2025 Revision



The 2025 CCMP was released this summer and can be found at [LISpartnership.org](https://lispartnership.org). It sets objectives for the next 10 years and actions for the next 5 years.

- Shorter, leaner, and directly to the point
- Simplified CCMP organizational structure: Goals → Objectives → Actions
- Two-page summary graphic of the Goals, Objectives, and Actions at the beginning of the CCMP
- Reductions from:
 - 20 Ecosystem Targets → 15 Objectives
 - 136 Implementation Actions → 47 Actions
- Appendices contain the technical descriptions of the objectives and actions

Vision Statement: Long Island Sound and its watershed have clean waters, healthy habitats, thriving wildlife, resilient coasts, and an engaged public.

Mission Statement: The Long Island Sound Partnership leads a collective effort to restore and care for the Sound and its watershed.

Values: Actionable Science, Adaptive Management, Respect and Trust

The CCMP contains four overarching goals:



Each goal has:

- **Objectives** - specific outcomes to be achieved by 2035 that will directly contribute to the goal
- **Actions** – broad, strategic activities to be taken in the next five years to achieve an objective

Goal: Clean Waters and Healthy Watersheds (CWHW)

Watershed Health Objective: Improve the ecosystem health of Long Island Sound and its watershed through protection and positive land use practices.

Primary Measure of Success: Establish and maintain a 100-foot or wider riparian buffer across 75 percent of the waterways and in 90 percent of the subbasins, and achieve and maintain the permanent protection of 35 percent of the Long Island Sound watershed by 2035.

Actions:

CWHW 2-1: Preserve, restore, and steward natural landscapes and the ecosystem services they provide through land conservation and protection efforts beyond the coastal boundary.

CWHW 2-2: Implement nature-based solutions and other practices that improve and maintain water quality and ecosystem health.

The CCMP contains four overarching goals:

Clean Waters
and Healthy
Watersheds

Thriving Habitats and
Abundant Wildlife

Sustainable and
Resilient
Communities

Informed and
Engaged Public

Goal 1: Restore and maintain water quality in Long Island Sound and its watershed.



Nutrients
Reduce nutrients across the watershed to restore and protect water quality and mitigate impacts on ecosystem health in Long Island Sound and its embayments.



Watershed Health
Improve the ecosystem health of Long Island Sound and its watershed through protection and positive land use practices.



Pathogens
Reduce pathogens and increase monitoring to protect water quality and human health, ensuring safe recreational and commercial use.



Toxic Contaminants
Research, monitor, assess, and support mitigation efforts on emerging and legacy toxic contaminants to reduce impacts on water and habitat quality in Long Island Sound.



Marine Debris
Achieve trash free waters by increasing clean-up efforts and preventing marine debris from entering Long Island Sound.

The CCMP contains four overarching goals:

Clean Waters
and Healthy
Watersheds

Thriving Habitats and
Abundant Wildlife

Sustainable and
Resilient
Communities

Informed and
Engaged Public

The CCMP contains four overarching goals:

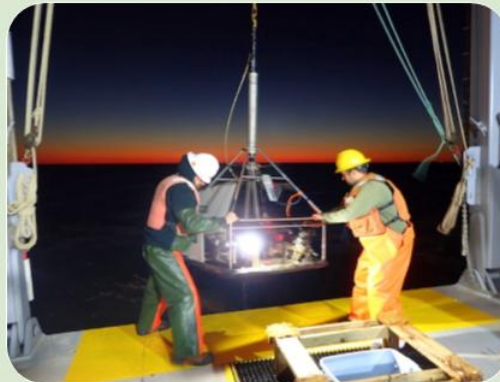
Clean Waters
and Healthy
Watersheds

Thriving Habitats and
Abundant Wildlife

Sustainable and
Resilient
Communities

Informed and
Engaged Public

Goal 2: Restore and protect the health and resilience of habitats and wildlife in Long Island Sound and its ecosystems.



Coastal Habitat

Protect, enhance, and assess the extent and health of coastal habitats and their associated wildlife through restorative measures and monitoring to combat deterioration and loss.

Offshore Habitat

Protect and enhance the health of offshore habitat and their associated species.

Habitat Connectivity

Increase connectivity of coastal habitat to enhance biodiversity and support migratory pathways.

Conserved Open Space

Conserve open space through land acquisition while maintaining and enhancing the total area of protected land.

The CCMP contains four overarching goals:

Clean Waters
and Healthy
Watersheds

Thriving Habitats and
Abundant Wildlife

Sustainable and
Resilient
Communities

Informed and
Engaged Public

The CCMP contains four overarching goals:

Clean Waters
and Healthy
Watersheds

Thriving Habitats and
Abundant Wildlife

Sustainable and
Resilient
Communities

Informed and
Engaged Public

Goal 3: Empower communities to plan for and respond to environmental challenges in ways that prioritize well-being for all.



Informed Decision-Makers

Increase the number of government officials, practitioners, and community leaders receiving training and support to increase their capacity to adapt to environmental challenges.



Community-Driven Decision-making

Increase the number of municipalities that identify key resilience priorities through local or regional community-driven planning processes.



Resilience Initiative Implementation

Implement initiatives to improve community resilience to flooding and other environmental challenges

The CCMP contains four overarching goals:

Clean Waters
and Healthy
Watersheds

Thriving Habitats and
Abundant Wildlife

Sustainable and
Resilient
Communities

Informed and
Engaged Public

The CCMP contains four overarching goals:

Clean Waters
and Healthy
Watersheds

Thriving Habitats and
Abundant Wildlife

Sustainable and
Resilient
Communities

Informed and
Engaged Public

Goal 4: Inspire and empower the public to appreciate, value, and protect Long Island Sound and the waters that flow into the Sound.



Public Access and Sense of Belonging

Increase and improve opportunities for everyone to access and appreciate Long Island Sound and the waters that flow into the Sound



Education and Environmental Literacy

Improve and expand the public's environmental knowledge of Long Island Sound and its watershed



Fostering Stewardship and Sustainable Behaviors

Increase public engagement in environmental practices that protect and conserve Long Island Sound and its watershed.

Goals, Objectives, and Actions

CLEAN WATERS AND HEALTHY WATERSHEDS

OBJECTIVES	ACTIONS
Nutrients: Reduce nutrients across the watershed to restore and protect water quality and mitigate impacts on ecosystem health in LIS and its embayments.	<ul style="list-style-type: none"> • Implement nutrient reduction actions across the LIS watershed focusing on the most impactful sources. • Support monitoring, modeling, and research, to improve understanding of source contributions, their impacts to ecosystem health, and the benefits of nutrient reduction actions. • Collaborate with stakeholders and partners to develop plans, tools, and strategies that support nutrient reduction actions.
Watershed Health: Improve the ecosystem health of LIS and its watershed through protection and positive land use practices.	<ul style="list-style-type: none"> • Preserve, restore, and steward natural landscapes and the ecosystem services they provide through land conservation and protection efforts beyond the coastal boundary. • Implement nature-based solutions that improve and maintain water quality and ecosystem health.
Pathogens: Reduce pathogens and increase monitoring to protect water quality and human health, ensuring safe recreational and commercial use.	<ul style="list-style-type: none"> • Evaluate and improve wastewater and stormwater infrastructure, and support upgrades or sewer connections of inadequate onsite wastewater treatment systems in the LIS coastal watershed boundary. • Expand sampling and source tracking and encourage advancements in methodology.
Toxic Contaminants: Research, monitor, assess, and reduce emerging and legacy toxic contaminants to mitigate impacts on water and habitat quality in LIS.	<ul style="list-style-type: none"> • Identify existing and emerging contaminants of concern and support mitigation efforts. • Continue collection and evaluation of contaminant data. • Encourage proactive research and assessment of emerging contaminants.
Marine Debris: Achieve trash free waters by increasing clean-up efforts and preventing marine debris from entering LIS.	<ul style="list-style-type: none"> • Support research and monitoring to better understand the extent, sources, and impacts of debris on the ecosystem. • Advance and implement interception technologies and tools that remove debris and support education and outreach. • Support the removal of marine debris in LIS and coastal watersheds. • Inform and support the development and implementation of municipal and state marine debris plans and policies to reduce, prevent, and intercept debris.

SUSTAINABLE AND RESILIENT COMMUNITIES

OBJECTIVES	ACTIONS
Informed Decision-Makers: Grow the # of municipal, nonprofit, and community leaders receiving training and support to increase capacity for adaptation to environmental challenges.	<ul style="list-style-type: none"> • Deliver or facilitate sustainability and resilience training programs responsive to community needs. • Support community-centered research, monitoring, or development of tools to assess the effects of extreme weather events and advance resilience.
Community-Driven Resilience: Increase the # of municipalities that identify key resilience priorities through local or regional community-driven planning processes.	<ul style="list-style-type: none"> • Develop resilience plans, including the incorporation of resiliency strategies into existing municipal, regional, or watershed plans. • Coordinate across municipal boundaries to advance collective resilience priorities. • Empower and increase engagement of community members and groups in local and regional resilience planning and decision-making.
Resilience Initiative Implementation: Implement initiatives to improve community resilience to flooding and other environmental challenges.	<ul style="list-style-type: none"> • Increase community capacity to implement and manage sustainable and resilient initiatives. • Develop and adopt regulations, codes, and ordinances that increase resilience. • Implement nature-based solutions that address flooding and other climate impacts. • Implement infrastructure projects that increase community sustainability and resilience to flooding and other climate impacts. • Monitor, maintain, and adaptively manage resilience projects to ensure their long-term success.

THRIVING HABITATS AND ABUNDANT WILDLIFE

OBJECTIVES	ACTIONS
Coastal Habitat: Protect and enhance the extent, health, and wildlife benefits of coastal habitats through restorative measures to combat deterioration and loss.	<ul style="list-style-type: none"> • Restore coastal habitat through established restoration techniques or help validate and communicate innovative approaches. • Install living shorelines for coastal habitat restoration and protection, including the conversion of existing hard-armored shorelines to a more natural condition. • Survey, research, and monitor changes in extent and abundance of coastal habitat types, focusing on tidal wetlands and seagrass.
Offshore Habitat: Protect and enhance the health of offshore habitat and their associated species.	<ul style="list-style-type: none"> • Promote marine spatial planning that balances human uses and protects ecosystem functions of offshore habitat and species. • Map the seafloor to characterize underwater habitats and use that data to enhance coastal and marine spatial planning and designation of protected areas and buffer zones. • Steward and restore offshore habitat, supporting the development and implementation of action plans and programs that incorporate community science, engagement, and participation.
Habitat Connectivity: Increase connectivity of coastal habitat to enhance biodiversity and support migratory pathways.	<ul style="list-style-type: none"> • Use remote sensing, mapping tools, modeling, and field verification to restore and protect habitat patches and river miles to enhance connectivity. • Remove stream barriers to restore fish and wildlife migration, sediment transport, and other stream functions. • Collaborate regionally to streamline permitting pathways to strengthen regional capacity for habitat restoration.
Conserved Open Space: Conserve open space through land acquisition while maintaining and enhancing the total area of protected land.	<ul style="list-style-type: none"> • Protect coastal habitat from development through the implementation of land conservation plans that identify priorities for conservation, management, and investment. • Increase access and enhance sustainable stewardship of conserved lands particularly for distressed communities.

INFORMED AND ENGAGED PUBLIC

OBJECTIVES	ACTIONS
Public Access and Sense of Belonging: Increase and improve opportunities for everyone to access and appreciate LIS and the waters that flow into the Sound.	<ul style="list-style-type: none"> • Collaborate with local governments, environmental groups, and community leaders to increase and improve public access and sense of belonging. • Develop and implement projects that increase the number and quality of public access sites. • Promote sense of belonging at public access sites through events, festivals, celebrations, materials, and programming.
Education and Environmental Literacy: Increase, improve, and expand the environmental literacy of people interacting with the LIS watershed.	<ul style="list-style-type: none"> • Increase collaboration among environmental education partners to elevate existing and initiate new environmental education programs. • Host and promote opportunities to participate in LIS-based education programs. • Develop engaging, multilingual, and innovative educational materials, tools, and activities. • Support efforts to assess the public's understanding of LIS and its watershed.
Fostering Stewardship and Sustainable Behaviors: Increase public engagement in environmental practices that protect and conserve LIS and its watershed.	<ul style="list-style-type: none"> • Involve the public in monitoring, restoration, and conservation of LIS and its ecosystems through volunteerism, participatory science, and community-led action. • Investigate the relationship between the public and the LIS ecosystem through social science research. • Develop campaigns and share messages to encourage residents to engage in environmentally friendly practices. • Promote environmentally friendly behaviors through outreach to beachgoers, boaters, anglers, and other Sound users. • Provide information, programming, resources, and incentives that enable local environmental groups, municipalities, schools, and others to teach and promote sustainable community practices.

Step 1: Think of a proposal for a project your organization is currently working on or wants to work on.

Step 2: Review the CCMP handout and identify 1-3 Actions under which your project would fit.

Step 3: Turn to the person next to you and share your project proposal. Discuss:

1. Which Actions did they relate to your project?
2. Are there any changes you could make to your project so that it better aligns to the CCMP Actions?
3. What challenges did you run into when selecting Actions?
4. Did any questions arise when talking through this activity?

Objectives:

- Measure of Success
- Technical Explanation
- Cost
- SMART Framework –
 - Specific
 - Measurable
 - Achievable
 - Relevant
 - Time-Bound

Actions:

- Description
- Cooperators and Partners
- Funding Sources
- Funding Needs
- Performance Measures
- Time Frame
- Extreme Weather Events Addressed
- Adaptation Strategy for Vulnerabilities

APPENDIX B

OBJECTIVE AND ACTION TECHNICAL EXPLANATIONS

The CCMP has a 10-year horizon and includes actions to help achieve the plan goals and objectives. These actions describe the priority areas the Partnership will focus on over the next five years. These actions are presented by goal; however, many of the actions will achieve progress in multiple goal areas. The technical explanations in Appendix B provide a full description of and rationale for each action and supporting activities in the CCMP.

Each action includes:

- A description about the proposed action
- The lead or cooperating agencies and organizations
- Potential sources for funding and the level need within five categories
 - \$ Less than \$25,000
 - \$\$ \$25,000 to \$150,000
 - \$\$\$ \$150,000 to \$1,000,000
 - \$\$\$\$ \$1,000,000 to \$15,000,000
 - \$\$\$\$\$ Greater than \$15,000,000
- Performance measures
- An approximate time frame for action completion
- Identification of the extreme weather events the action addresses
- Description of how the action will contribute to the adaptation strategy for vulnerabilities

Reviewing and updating actions every five years will enable adaptive management and the integration of emerging scientific and technological advancements. This regular refinement will ensure the CCMP remains current and incorporates the most effective management practices.

The five funding level categories represent broad ranges in which to distinguish and group funding needs of actions. The needed level of funding for an action will also determine the types of funding sources (e.g., government grants, local foundations, and clean water infrastructure grants and loans) most applicable to meeting that need.

The Partnership will assess implementation progress on a regular basis and update the website yearly. Before the conclusion of each implementation cycle, the Partnership will revisit the actions based on implementation successes and on new drivers, pressures, or issues. New actions will be developed for the next five-year planning cycle to support attainment of the goals and objectives.

Take 5 minutes by yourself to think through these two questions:

1. What are the outputs and products of your project?
2. What would the metrics of success be?

Questions?